

# HAPPY R-TYPE

LIFTING HEAVY  
CARGO FOR  
WORLDWIDE  
TRANSPORT



**GIANT**  
MARINE

**BIGLIFT**

# HAPPY R-TYPE

HAPPY RIVER, HAPPY ROVER, HAPPY RANGER, ENCHANTER

## HATCH OPENINGS AND ALLOWABLE LOADS

### HATCH OPENINGS

weather deck	91.0 x 17.7 m
tween deck	87.5 x 17.6 m

### ALLOWABLE LOADS

weather deck hatch covers	12.5 t/m <sup>2</sup>
tween deck hatch covers	10.5 t/m <sup>2</sup>
tank top	20.0 t/m <sup>2</sup>

### FLOOR SPACE

weather deck	2,450 m <sup>2</sup>
tween deck	1,525 m <sup>2</sup>
tank top	1,386 m <sup>2</sup>

## CRANES

2 x 400 mt SWL

**COMBINABLE**  
800 mt

**TROLLEY**  
25 mt SWL

## PRINCIPAL DIMENSIONS

Length overall	138.00 m
Length p.p.	127.90 m
Breadth moulded	22.88 m
Summer draft	9.50 m

## REGISTRATION

The Netherlands  
m.v. Enchanter: Panama

## CLASS

Lloyd's X100 A1 XLMC-UMS  
LA LNC AA strengthened for heavy cargoes Ice class Finnish/Swedish 1A, Great lakes fitted



## MAIN ENGINE

Wärtsilä	8775 kW
Bowthruster	850 kW
Service speed	16.4 kn at draft 7.00 m

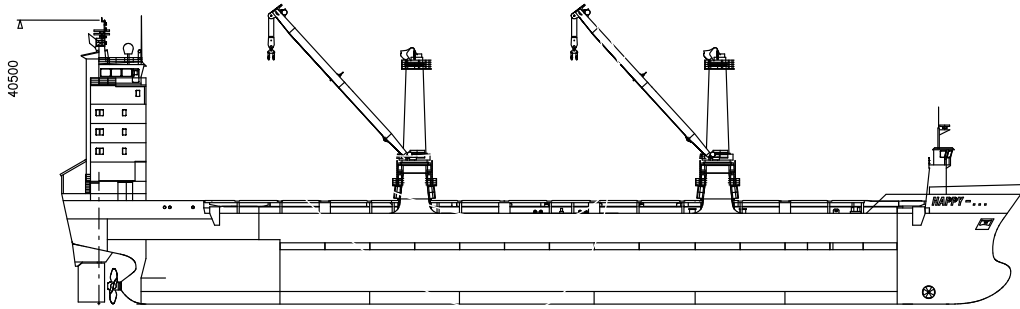
## CAPACITY

Grain = bale	17,863 m <sup>3</sup>
If tween deck installed	16,338 m <sup>3</sup>

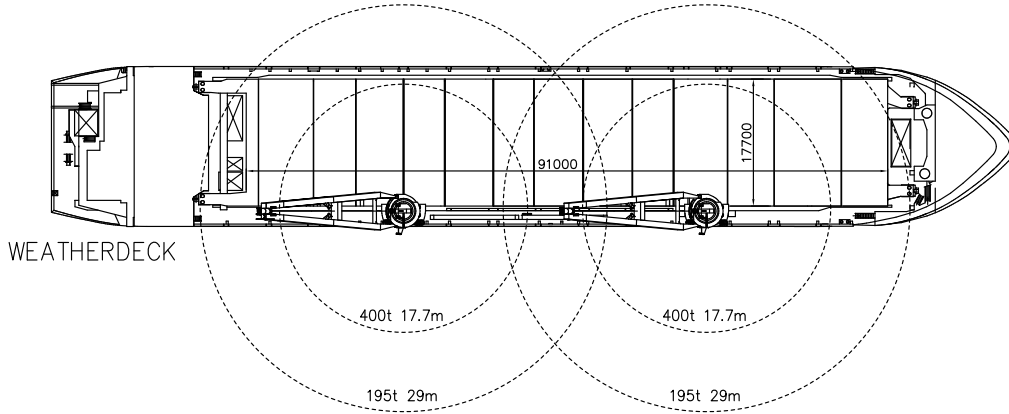
## DEADWEIGHT

At Summer (sea water) draft  
15,634 mton inc. tween deck hatch covers, pillars

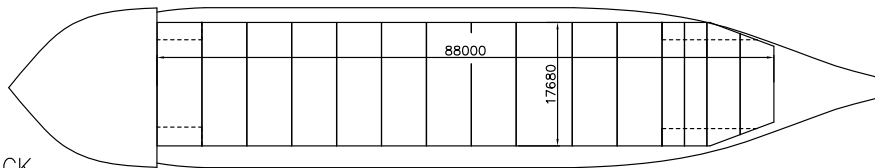
# HAPPY R-TYPE



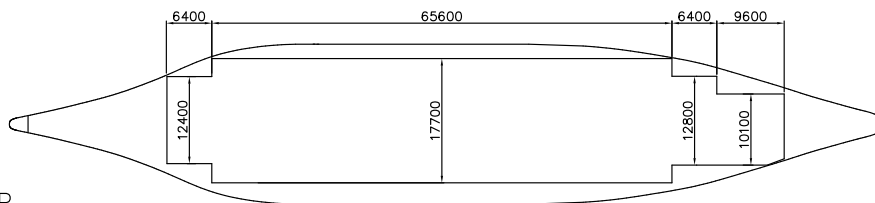
SIDE VIEW



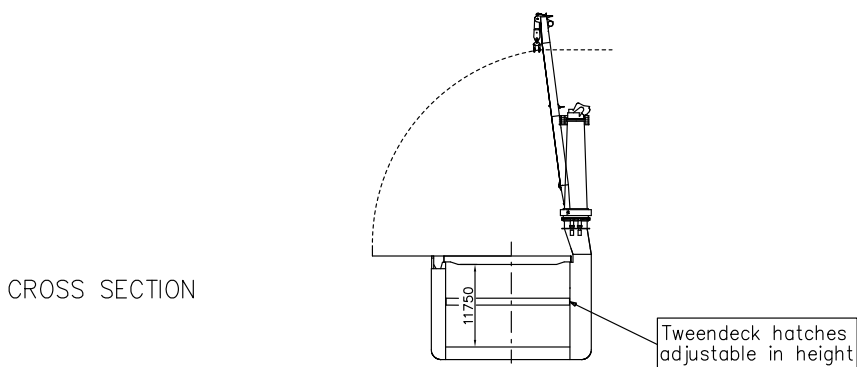
WEATHERDECK



TWEENDECK



TANKTOP



CROSS SECTION



## Vessel TC description - m.v. HAPPY RIVER

<b>General</b>				
Type of vessel	General Cargo Heavy Lift vessel			
Class	Lloyd's 100A1, CG, *1WS, Ice Class 1A PCWBT (Swedish/Finnish), $\boxtimes$ LMC, UMS, NAV1, strengthened for heavy cargoes, suitable for timber deck cargoes and container in hold and on deck.			
Built	1997			
Flag	Netherlands			
Port of registry	Amsterdam			
Owner	Rederij Happy River, Amsterdam			
P&I club	Standard Steamship Owners' P&I, Bermuda			
Official number	18979 Z R97			
IMO no.	9139294			
MMSI	244559000			
Call sign	P C A W			
Satelite number	telex	324455916		
	phone	+870 3244 55910 / 2		
	fax	+870 3244 55915		
	mobile	+31 6 5115 2912		
	e-mail	<a href="mailto:pcaw@blobeemail.com">pcaw@blobeemail.com</a>		
Inmarsat "C"	telex 1	424455910		
	telex 2	424455920		
<b>Tonnage</b>		<u>International</u>	<u>Panama</u>	<u>Suez</u>
GT		10,990 t	37,698.97 m3	10,744.19 t
NT		5,041 t	9,255 t	8,901.32 t
<b>Measurements</b>				
Length overall		138.04	m	
Length between perpendiculars		127.94	m	
Breadth moulded		22.80	m	
Depth moulded		12.95	m	
Width overall (inc. crane platforms)		23.05	m, inc. 30 cm seaway fenders	
Draft Summer (salt)		9.513	m	
Deadweight Summer (salt)		15,593	mton	
Airdraft over keel		40.50	m, cranes down	
Immersion (average)		26.50	mton / cm	
Floor space weather deck		2,450	m <sup>2</sup>	
	tween deck	1,525	m <sup>2</sup>	
lower hold		1,386	m <sup>2</sup>	



<p><b>Hatches</b> 1 hold, 1 hatch</p> <p>hatch opening to tweendeck hatch opening to lower hold</p> <p>hold heights lower hold heights tween deck heights</p> <p>some tween deck pontoons have limitations on height positions.</p> <p>total hold height</p> <p>Deck strength      weather deck                                  partly with stanchions                                  tween deck                                  partly with stanchions                                  tank top</p>	<p>partly folding forward/aft; partly lift away pontoon / rolling type.</p> <p>91 x 17.68 m 88 x 17.68 m</p> <p>adjustable in steps of 50 cm; can be positioned in 13 different heights minimum height in lower hold: 3.425 m maximum height in lower hold: 8.925 m</p> <p>11.75 m</p> <p>4.0 mton/m<sup>2</sup> 12.5 mton/m<sup>2</sup> 3.5 mton/m<sup>2</sup> 10.5 mton/m<sup>2</sup> 20.0 mton/m<sup>2</sup></p>
<p><b>Cargo facilities</b> <b>Cranes</b> position frame 116  frame 62</p> <p>both cranes are equipped with a trolley</p>	<p>Starboard side</p> <p>400 mton SWL at 18.00 m or 195 mton SWL at 29.00 m 400 mton SWL at 18.00 m or 195 mton SWL at 29.00 m</p> <p>37.5 mton SWL</p>
<p><b>Lifting beams</b> capacity / own weight</p>	<p>1 x 800.0 mton SWL / 18.0 mton 1 x 400.0 mton SWL / 14.0 mton</p>
<p><b>Mechanical details</b> mechanical ventilation CO<sub>2</sub> power supply reefer plugs</p>	<p>15 air changes per hour yes 440 volts, 60 Hz up to 800 kW</p>
<p><b>Tank capacities</b> ballast fresh water HFO MGO Lub oil</p>	<p>5,995.00 cbm 285.00 cbm 1,257.00 cbm 181.00 cbm 48.00 cbm</p>



<b>Speed/Consumption</b>													
Speed through water with fuel consumption (inc. shaft generators) basis HFO 380 cst RMG 35; wind not exceeding 2 beaufort; calm smooth sea without current													
Fuel consumption per day in mtons (even keel)	abt. 15.4 knots at abt. 30 ton/day abt. 16.4 knots at abt. 36 ton/day												
In port:	abt. 2.0 ton MGO-DMA per day, cargo gear working abt. 1.5 ton MGO-DMA per day, cargo gear idle												
<b>Engine</b>													
type	Wärtsilä Type 9L46B												
	8775 kW, 500 rpm												
bow thruster capacity	850 kW												
ballast pumps, capacity	2 at 750 m <sup>3</sup> per hour												
<b>Cargo space</b>													
grain	17,863 cbm If tweendeck installed –1525cbm												
bale	17,863 cbm												
	<table border="1"> <thead> <tr> <th>TEU</th> <th>FEU</th> <th>+ TEU</th> </tr> </thead> <tbody> <tr> <td>683</td> <td>298</td> <td>66</td> </tr> <tr> <td><u>356</u></td> <td><u>159</u></td> <td><u>38</u></td> </tr> <tr> <td><u>1,039</u></td> <td><u>457</u></td> <td><u>+ 104</u></td> </tr> </tbody> </table>	TEU	FEU	+ TEU	683	298	66	<u>356</u>	<u>159</u>	<u>38</u>	<u>1,039</u>	<u>457</u>	<u>+ 104</u>
TEU	FEU	+ TEU											
683	298	66											
<u>356</u>	<u>159</u>	<u>38</u>											
<u>1,039</u>	<u>457</u>	<u>+ 104</u>											
container capacity deck													
hold													
(up to visibility of IMO line)													
stackloads deck	60 90 tons												
tweendeck	120 144 tons												
lower hold	120 144 tons												
Remarks:	heights up to 9'6": limited space for 45' containers												
Vessel is fully equipped													
Vessels is partly self-sustained.													

All details are approximate and without guarantee. They must not be used as basis for charter parties or contracts without owner's explicit written authority.

**GIANT MARINE, General Agents for BigLift Shipping B.V**

To contact us, click on the "CONTACT US" button available on each page of this website and fill up the form.