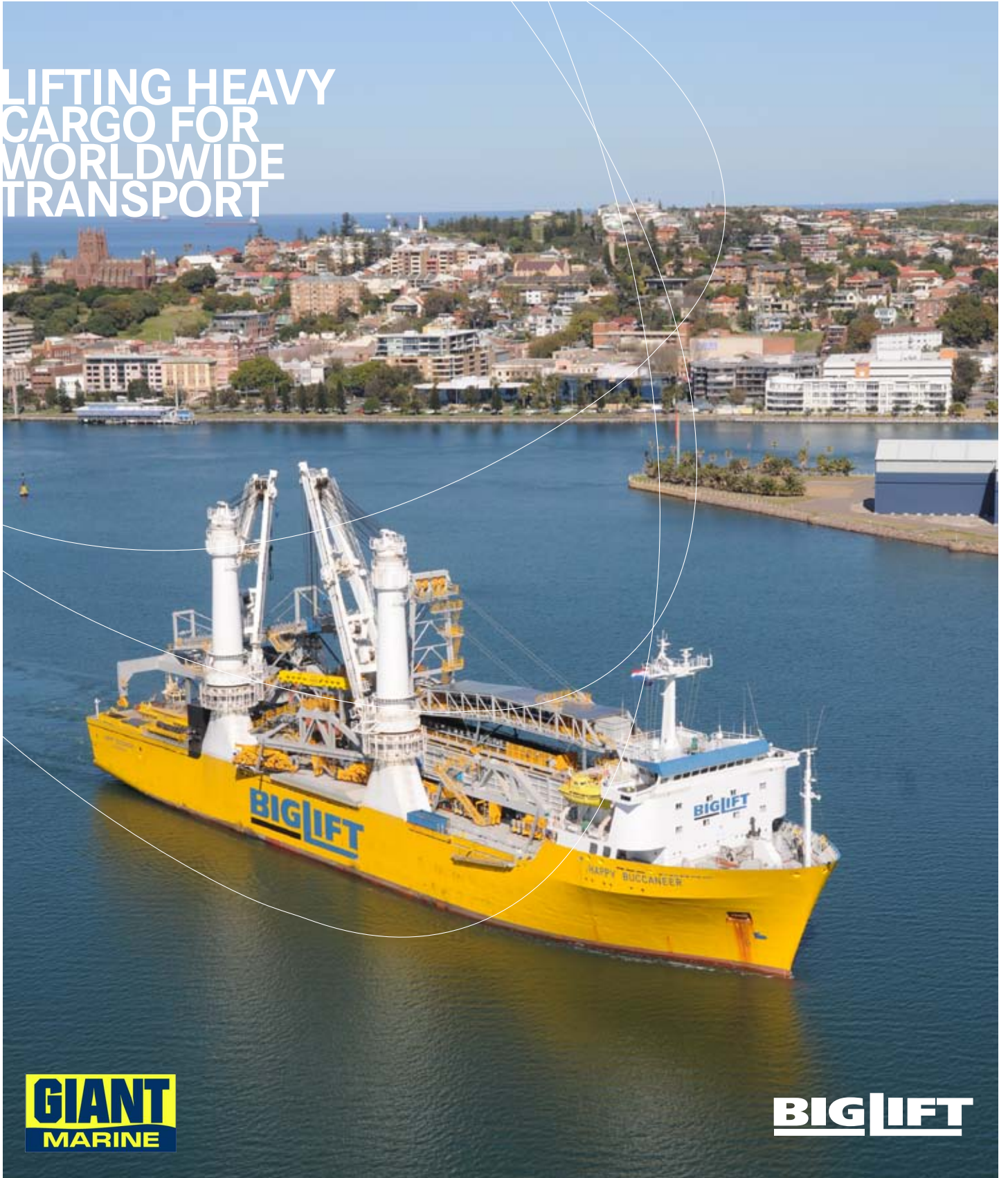


# HAPPY BUCCANEER

LIFTING HEAVY  
CARGO FOR  
WORLDWIDE  
TRANSPORT



**GIANT**  
MARINE

**BIGLIFT**

# HAPPY BUCCANEER

## HATCH OPENINGS AND ALLOWABLE LOADS

### HATCH OPENINGS

Weather deck	110.5 x 20.6 m
Tween deck	67.0 x 20.0 m

### ALLOWABLE LOADS

Weather deck hatch covers	15.0 t/m <sup>2</sup>
Tween deck hatch covers	15.0 t/m <sup>2</sup>
Tank top	15.0 t/m <sup>2</sup>

### FLOOR SPACE

Weather deck	3,067 m <sup>2</sup>
Tween deck	2,275 m <sup>2</sup>
Tank top	1,344 m <sup>2</sup>

## CRANES

2 x 700 mt SWL

### COMBINABLE

1400 mt

### TROLLEY

25 mt SWL

## PRINCIPAL DIMENSIONS

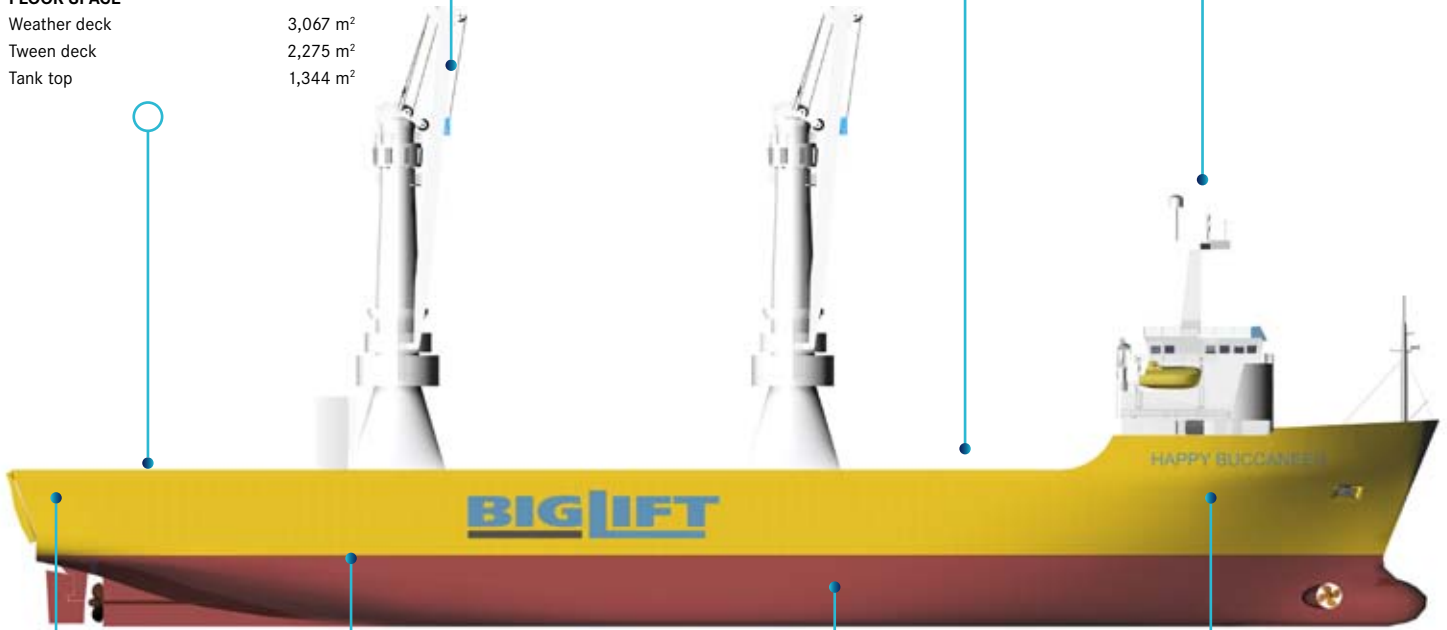
Length overall	145.89 m
Length p.p.	134.00 m
Breadth moulded	28.30 m
Summer draft	8.24 m
Draft open sailing	7.02 m

## REGISTRATION

The Netherlands

### CLASS

LRS X100A1 XLMC UMS strengthened for heavy cargoes



## RAMP

Position	stern
Dimensions	20.3 x 7.6 m
Capacity	2,500 mt

## MAIN ENGINE

Hitachi Sulzer	2 sets 3840 kW
Bowthruster	750 kW
Service speed	14.75 kn at draft 6.00 m

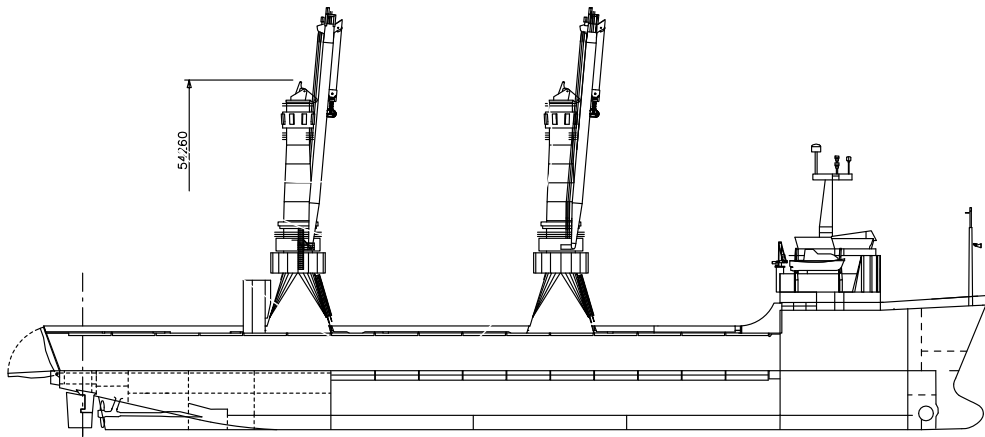
## CAPACITY

Lower hold	7,517 m <sup>3</sup>
Tween deck	12,391 m <sup>3</sup>

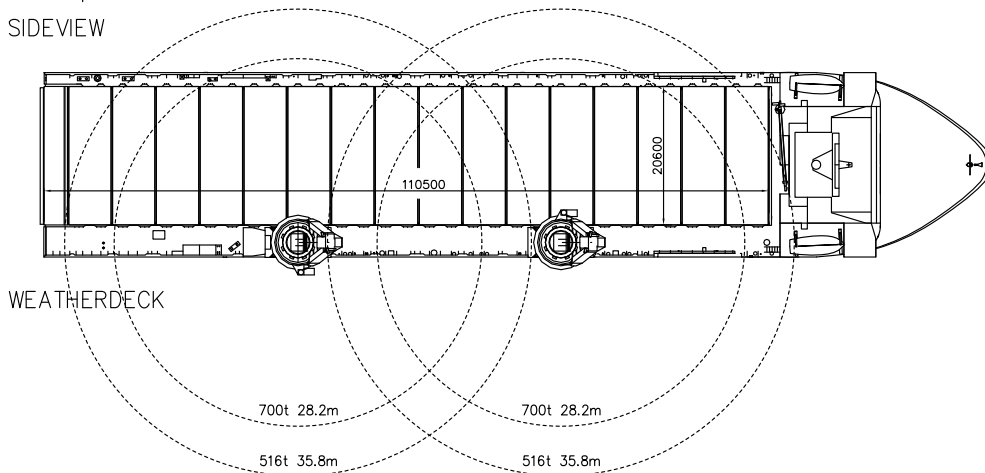
## DEADWEIGHT

At Summer (sea water) draft  
13,740 mton inc. tween deck hatch covers, pillars

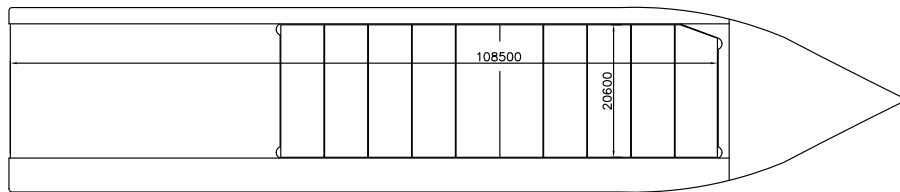
# HAPPY BUCCANEER



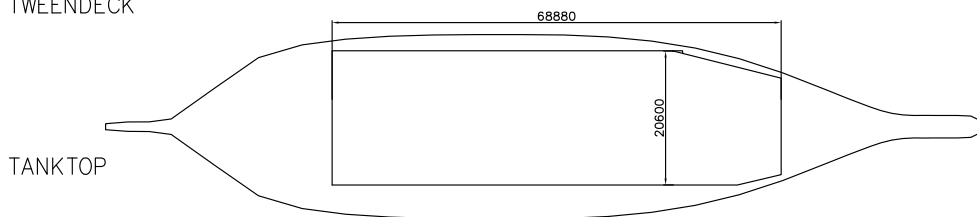
SIDEVIEW



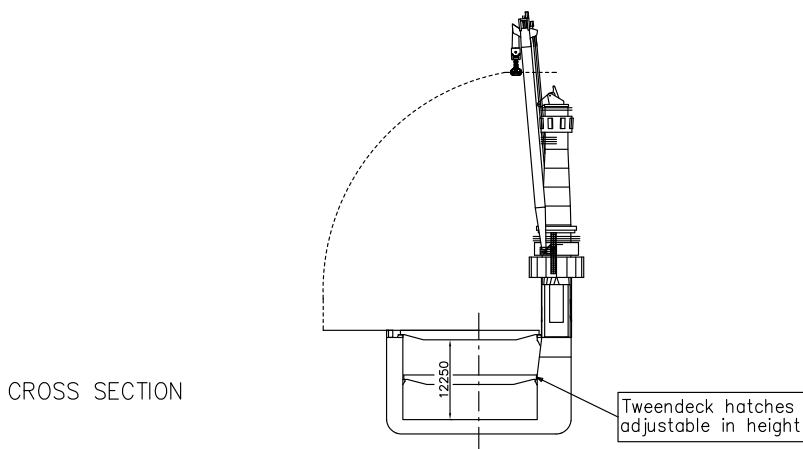
WEATHERDECK



TWEENDECK



TANKTOP



CROSS SECTION



## Vessel TC description - m.v. HAPPY BUCCANEER

<b>General</b> type of vessel class built flag port of registry owner P&I club official number IMO no. MMSI call sign satelite number      phone mobile fax e-mail mini V.sat Inmarsat "C" telex	General Cargo Heavy Lift Ro-Ro vessel LRS, ⚓100A1, ⚓LMC UMS 1984 Netherlands Amsterdam BigLift Amstel B.V. Standard Steamship Owners' P&I, Bermuda 8756 Z 8300389 244203000 P E N D +870 7636 28381 +31 6 5115 4272 +870 7639 29544 <a href="mailto:pend@globeemail.com">pend@globeemail.com</a> +31 20 890 5724 424420310 + 424420320																																																		
<b>Tonnage</b> GT NT	<u>International</u> 16,341.00 4,902.00	<u>Panama</u> 16,352 13,473	<u>Suez</u> 16,081.43 12,642.02																																																
<b>Measurements</b> Length overall Length between perpendiculars Breadth moulded Depth moulded Width overall (inc. crane platforms) Draft Summer (salt) Deadweight Summer (salt) Airdraft over keel Immersion (average) Floor space    weather deck tween deck lower hold	<table style="width: 100%; border-collapse: collapse;"> <tr> <td style="width: 40%;"></td> <td style="width: 20%; text-align: center;">145.89</td> <td style="width: 20%; text-align: center;">m</td> <td style="width: 20%;"></td> </tr> <tr> <td></td> <td style="text-align: center;">134.00</td> <td style="text-align: center;">m</td> <td></td> </tr> <tr> <td></td> <td style="text-align: center;">28.30</td> <td style="text-align: center;">m</td> <td></td> </tr> <tr> <td></td> <td style="text-align: center;">14.80</td> <td style="text-align: center;">m</td> <td></td> </tr> <tr> <td></td> <td style="text-align: center;">30.27</td> <td colspan="2" style="text-align: center;">m (31.07m crane cabin outboard)</td> </tr> <tr> <td></td> <td style="text-align: center;">8.24</td> <td style="text-align: center;">m</td> <td></td> </tr> <tr> <td></td> <td style="text-align: center;">13,740.00</td> <td colspan="2" style="text-align: center;">tons</td> </tr> <tr> <td></td> <td style="text-align: center;">54.26</td> <td colspan="2" style="text-align: center;">m (boom down)</td> </tr> <tr> <td></td> <td style="text-align: center;">33.20</td> <td colspan="2" style="text-align: center;">mton / cm</td> </tr> <tr> <td></td> <td style="text-align: center;">3,067.00</td> <td colspan="2" style="text-align: center;">m<sup>2</sup></td> </tr> <tr> <td></td> <td style="text-align: center;">2,275.00</td> <td colspan="2" style="text-align: center;">m<sup>2</sup></td> </tr> <tr> <td></td> <td style="text-align: center;">1,379.00</td> <td colspan="2" style="text-align: center;">m<sup>2</sup></td> </tr> </table>				145.89	m			134.00	m			28.30	m			14.80	m			30.27	m (31.07m crane cabin outboard)			8.24	m			13,740.00	tons			54.26	m (boom down)			33.20	mton / cm			3,067.00	m <sup>2</sup>			2,275.00	m <sup>2</sup>			1,379.00	m <sup>2</sup>	
	145.89	m																																																	
	134.00	m																																																	
	28.30	m																																																	
	14.80	m																																																	
	30.27	m (31.07m crane cabin outboard)																																																	
	8.24	m																																																	
	13,740.00	tons																																																	
	54.26	m (boom down)																																																	
	33.20	mton / cm																																																	
	3,067.00	m <sup>2</sup>																																																	
	2,275.00	m <sup>2</sup>																																																	
	1,379.00	m <sup>2</sup>																																																	



<p><b>Hatches</b>  1 hold, 1 hatch                    main deck                    tween deck  opening to tween deck                    lower hold    heights      tween deck                    lower hold                    total hold    Deck strength      weather deck                            with stanchions                            tween deck                            with stanchions    Tank top</p>	<p>110.50 x 20.60 all removable pontoons  17 steel pontoons  10 steel pontoons  20.60 m x 110.50 m  20.00 m x 67.20 m    5.3805 m  5.4195 m  12.250 m    5.0 mton/m<sup>2</sup>  15.0 mton/m<sup>2</sup>  5.0 mton/m<sup>2</sup>  15.0 mton/m<sup>2</sup>  15.0 mton/m<sup>2</sup></p>
<p><b>Ramp</b>  Position  capacity  dimensions  working height</p>	<p>stern  2,500 mton  20.30 x 7.60 m  2 to 3.5 metres quay height</p>
<p><b>Cargo facilities</b>  Cranes &amp; position            at frame 42            at frame 90</p>	<p>2 at starboard side  700 mton SWL at 0°  700 mton SWL at 0°  each crane equipped with trolley 25 mton SWL</p>
<p><b>Lifting beams</b>  capacity / own weight</p>	<p>1 x 1,050.0 mton SWL /40.0 mton  2 x 540.0 mton SWL /11.0 mton</p>
<p><b>Mechanical details</b>  mechanical ventilation  CO2  power supply  reefer plugs</p>	<p>2 air changes per hour  yes:  440 V, 60 Hz  in both mast houses and at accommodation</p>
<p><b>Tank capacities</b>  ballast  fresh water  HFO  MDO  Lub oil</p>	<p>10,353.59 cbm  209.72 cbm  1,330.82 cbm  238.40 cbm  37.93 cbm</p>



<b>Speed/Consumption</b>	
Speed through water with fuel consumption (inc. shaft generators) basis HFO 380 cst - RMG 35; wind not exceeding 2 beaufort; calm smooth sea without current:	
Fuel consumption per day in mts (even keel) / 6 m draft:	abt. 14.7 knots at abt 31.0 ton/day abt. 13.5 knots at abt 26.0 ton/day
In port:	abt. 2.8 ton MDO DMC per day, cargo gear working abt. 2.0 ton MDO DMC per day, cargo gear idle
<b>Engine</b> type	Hitachi Sulzer 6ZAL 40 2 sets, each 3838 kW at 560 rpm
bow thruster, capacity	735 kW
ballast pumps, capacity	3 at 600 m <sup>3</sup> per hour each
<b>Cargo space</b>	
bale tweendeck	7,517      cbm
lower hold	12,391      cbm
container capacity, tweendecks not on board:	TEU      FEU+      TEU
deck	640      320      8
hold	410      192      26
	1,050      512+      34
stackloads	
deck	60      80      tons
tweendeck	60      80      tons
lower hold	60      80      tons
Remarks:	
Vessel is fully equipped,	
Vessel is partly self-sustained.	

All details are approximate and without guarantee. They must not be used as basis for charter parties or contracts without owner's explicit written authority.

**GIANT MARINE, General Agents for BigLift Shipping B.V**

To contact us, click on the "CONTACT US" button available on each page of this website and fill up the form.