

TRA-TYPE

LIFTING HEAVY
CARGO FOR
WORLDWIDE
TRANSPORT



GIANT
MARINE

BIG|LIFT

TRA-TYPE

TRAMPER, TRACER, TRANSPORTER, TRAVELLER

HATCH OPENINGS AND ALLOWABLE LOADS

HATCH OPENINGS

weather deck	64.4 x 15.3 m
tween deck	64.4 x 15.3 m

ALLOWABLE LOADS

weather deck hatch covers	3.0 t/m ²
tween deck hatch covers	3.0 t/m ²
tank top	15.0 t/m ²

FLOOR SPACE

weather deck	1,330 m ²
tween deck	974 m ²
tank top	850 m ²

CRANES

2 x 275 mt SWL

COMBINABLE
500 mt

TROLLEY
6 mt SWL

PRINCIPAL DIMENSIONS

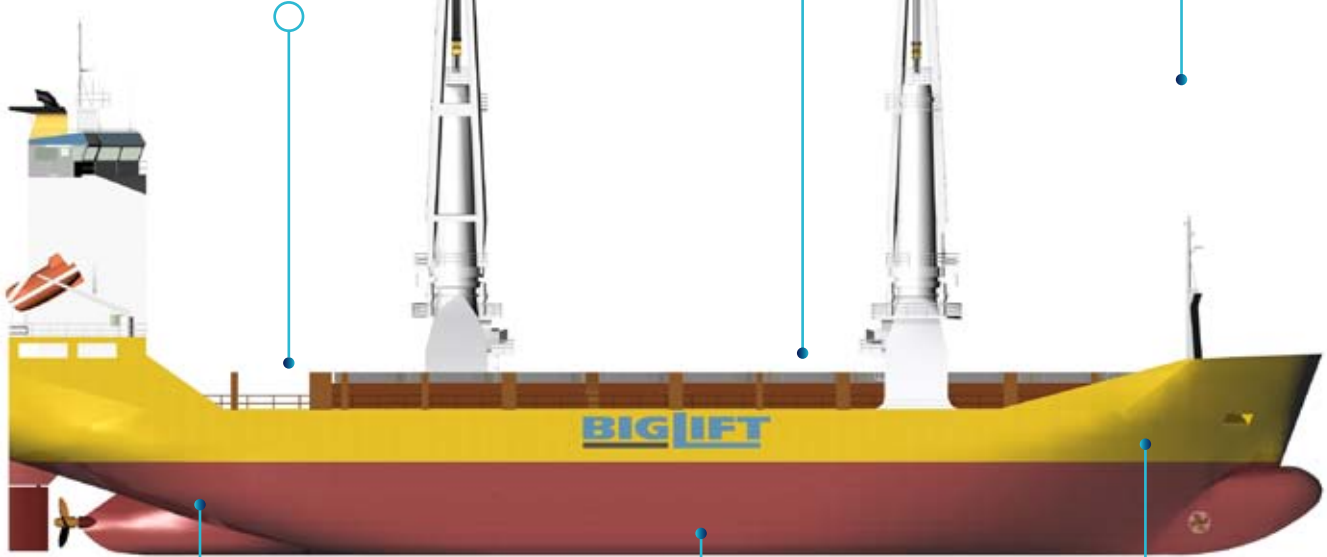
Length overall	100.50 m
Length p.p.	96.50 m
Breadth moulded	20.40 m
Summer draft	8.20 m

REGISTRATION

The Netherlands

CLASS

BV 1 3/3 E, Ice Class 1C, strengthened for heavy cargoes E0, W1-0C, Grain, LCS (SIG), DG-P, DG-B, Great lakes fitted



MAIN ENGINE

Wärtsilä	7800 kW
Bowthruster	500 kW
Speed	16.0 kn

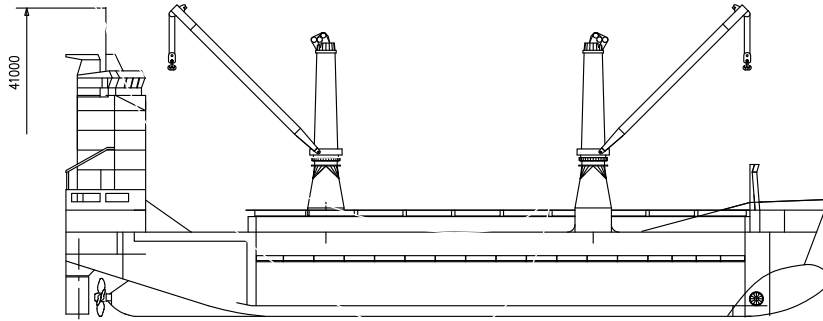
CAPACITY

Grain	10,530 m ³
Bale	9,720 m ³

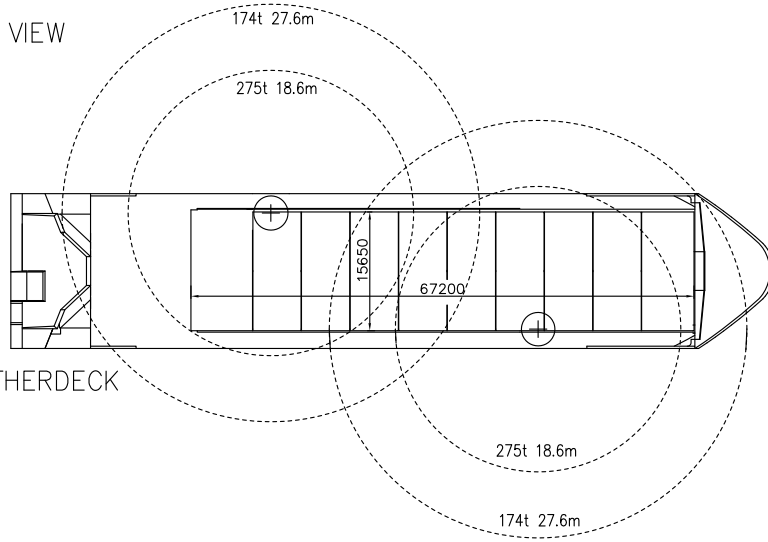
DEADWEIGHT

At Summer (Sea water) draft
8,600 mton inc. tween deck hatch covers, pillars

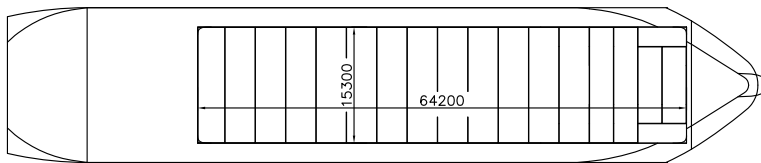
TRA-TYPE



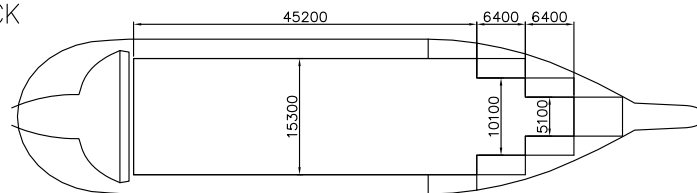
SIDE VIEW



WEATHERDECK

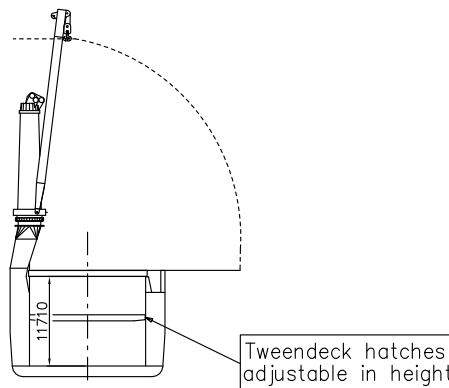


TWEENDECK



TANKTOP

CROSS SECTION



Vessel TC description - m.v. TRANSPORTER

General			
type of vessel	General cargo ship; container ship; Deep sea heavy cargo		
class	BV X HULL X MACH X AUT-UMS X SY-SYS-NEQ-1, general cargo ship, container ship, unrestricted navigation, heavy cargo (15 t/m2 on tanktop), MON-SHAFT, grabloading, Ice Class 1C, Great Lakes fitted		
built	1999		
flag	Dutch		
port of registry	Amsterdam		
owner	C.V. Scheepvaartonderneming Transporter, Amsterdam		
P&I club	The Standard		
official number	10348 Z A 2004		
IMO no.	9204714		
MMSI	245981000		
call sign	P H A L		
satellite number	telex	324598113	
	Sat-C tlx	424598110	
	phone	+870 3245 98110 / 4 / 5	
	fax	+870 3245 98111	
	mobile	+31 6 5110 9366	
	e-mail	phal@globeemail.com	
	mini V.sat	+31 20 890 5576	
Tonnage	<u>International</u>	<u>Panama</u>	<u>Suez</u>
GT	6,714	23,362 cbm	6,665
NT	2,888	pc/ums 6,109	4,888.3
Measurements			
Length overall	100.5 m		
Length between perpendiculars	96.52 m		
Breadth moulded	20.40 m		
Depth moulded	11.09 m		
Width overall (inc. fenders)	20.70 m		
Draft max. Summer (salt)	8.20 m		
Deadweight Summer (salt)	abt 8,600.0 mton		
Airdraft over keel	41.80 m (cranes down)		
Immersion (salt) mton / cm	at 5 m draft: 15.83 m		
	at 6 m draft: 16.85 m		

<p>Floor space weather deck tween deck lower hold cargo capacity:</p>	<p>at 7 m draft: 17.70 m at 8 m draft: 18.53 m 1,025.0 m² (on hatch covers only) 952.0 m² (exc. water chests) 786.0 m² (exc. water chests) abt. 6800 mton basis 98% bunkers + all ballast tanks dry!</p>									
<p>Hatches 1 hold hatch opening to tweendeck hatch opening to lower hold hold heights total hold height Deck strength upper deck hatch covers tween deck hatch covers tank top</p>	<p>10 upperdeck hatch covers 17 tweendeck hatch covers pontoon / lift away 64.40 x 15.25 64.40 x 15.25 (partly 10.07/partly 5.10) most t.d. hatch covers can be positioned in 2 different heights <table data-bbox="724 1039 1350 1187"> <tr> <td></td> <td>lower hold height</td> <td>tween deck height</td> </tr> <tr> <td>low position</td> <td>5.93 m</td> <td>5.10 m</td> </tr> <tr> <td>high position</td> <td>8.03 m</td> <td>3.00 m</td> </tr> </table> 11.75 m (t/decks not installed) 3.0 mton/m² 3.0 mton/m² 15.0 mton/m² (less on water chest)</p>		lower hold height	tween deck height	low position	5.93 m	5.10 m	high position	8.03 m	3.00 m
	lower hold height	tween deck height								
low position	5.93 m	5.10 m								
high position	8.03 m	3.00 m								
<p>Cargo facilities Cranes position each crane (from centre line crane) (basis 0 degrees list) cranes working in tandem: both cranes are equipped with an auxiliary hoist</p>	<p>forward crane on starboard, aft crane on port side 275 mton SWL at 5.44 - 18.62 m radius decreasing to resp. 250 mton SWL upto 20.59 m radius 200 mton SWL upto 25.15 m radius 174 mton SWL upto 27.44 m radius about 500 mt lifting capacity, subject to cargo details. 6 mton SWL</p>									

Lifting beams capacity / own length	1 x 500.0 mton SWL / 15.0 m 1 x 275.0 mton SWL / 12.0 m
Mechanical details mechanical ventilation CO ₂ power supply reefer plugs	30 air changes per hour (empty hold) yes 440 volts, 60 Hz upto 900 kW (24 sockets in aft bulkhead PS/BB)
Tank capacities ballast water HFO, inc. service, settling, overflow, drain tanks MGO, inc. service, settling, storage tanks Lub oil, inc. thermal oil, main & aux. Fresh water Misc. tanks (sewage, sludge, waste oil, etc.)	2,879.40 cbm* 900.30 cbm 113.60 cbm 76.90 cbm 225.29 cbm 60.76 cbm * aft peak port side, presently in use as freshwater tank. May also be used as ballast tank, adding 170.2 cbm to ballast capacity.
Speed/Consumption Speed through water with fuel consumption (inc. shaft generators) basis HFO 380 cst RMG 35; wind not exceeding 2 beaufort; calm smooth sea without current, deep water:	
Speed/Fuel consumption in mts (even keel, draft 7.00 m)	abt. 14.5 knots at abt. 20 ton/day abt. 16.0 knots at abt. 28 ton/day
In port:	abt. 2.5 ton MGO-DMA per day, cargo gear working abt. 1.0 ton MGO-DMA per day, cargo gear idle
Engine type bow thruster capacity ballast pumps, capacity	Wärtsilä Type 8L 46B 7800 kW, 500 rpm 500 kW 2 at 250 m ³ per hour
Cargo space grain bale	10,530.0 cbm (tweendeck not installed) 9,720 cbm (tweendecks installed)

		TEU	FEU	
gearless container capacity	deck	176	43	
	(TEU: basis 10t/teu)	<u>195</u>	<u>82</u>	+ 8 TEUs à 20 mton
	(FEU: basis 20t/teu)	<u>371</u>	<u>125</u>	
stackloads	deck	60	80	mtons
	hatches	50	65	mtons
	lower hold	100	128	mtons
Remarks:		heights upto 8'6"; in holds 9'6"		
Vessel is fully equipped				
Vessel is partly self-sustained.				

All details are approximate and without guarantee. They must not be used as basis for charter parties or contracts without owner's explicit written authority.

GIANT MARINE

General Agents for BigLift Shipping B.V
3 rue du Maréchal de Lattre de Tassigny
78150 LE CHESNAY
Tel: 01.39.63.37.37
Fax: 01.39.55.81.49
Email: info@giantmarine.com

Mic: **M. Gilles THOMAS**
Email: thomas@giantmarine.com

Mic: **M. Paul-Henri TANON**
Email: tanon@giantmarine.com