

# TRA-TYPE

LIFTING HEAVY  
CARGO FOR  
WORLDWIDE  
TRANSPORT



**GIANT**  
MARINE

**BIG LIFT**

# TRA-TYPE

TRAMPER, TRACER, TRANSPORTER, TRAVELLER

## HATCH OPENINGS AND ALLOWABLE LOADS

### HATCH OPENINGS

weather deck	64.4 x 15.3 m
tween deck	64.4 x 15.3 m

### ALLOWABLE LOADS

weather deck hatch covers	3.0 t/m <sup>2</sup>
tween deck hatch covers	3.0 t/m <sup>2</sup>
tank top	15.0 t/m <sup>2</sup>

### FLOOR SPACE

weather deck	1,330 m <sup>2</sup>
tween deck	974 m <sup>2</sup>
tank top	850 m <sup>2</sup>

## CRANES

2 x 275 mt SWL

**COMBINABLE**  
500 mt

**TROLLEY**  
6 mt SWL

## PRINCIPAL DIMENSIONS

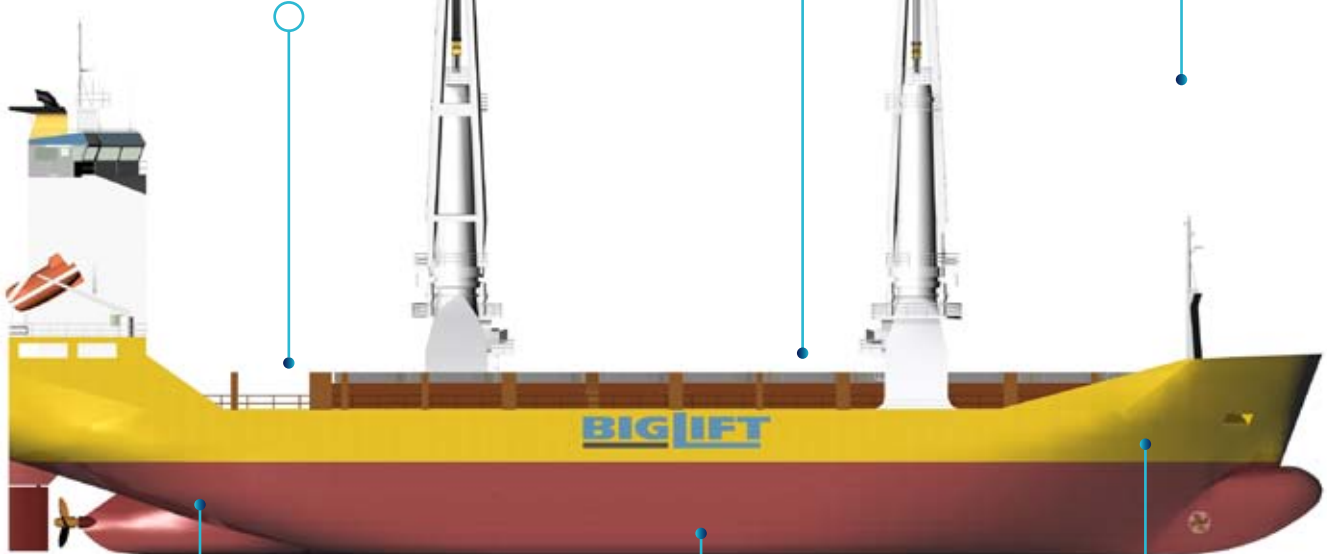
Length overall	100.50 m
Length p.p.	96.50 m
Breadth moulded	20.40 m
Summer draft	8.20 m

## REGISTRATION

The Netherlands

## CLASS

BV 1 3/3 E, Ice Class 1C, strengthened for heavy cargoes E0, W1-0C, Grain, LCS (SIG), DG-P, DG-B, Great lakes fitted



## MAIN ENGINE

Wärtsilä	7800 kW
Bowthruster	500 kW
Speed	16.0 kn

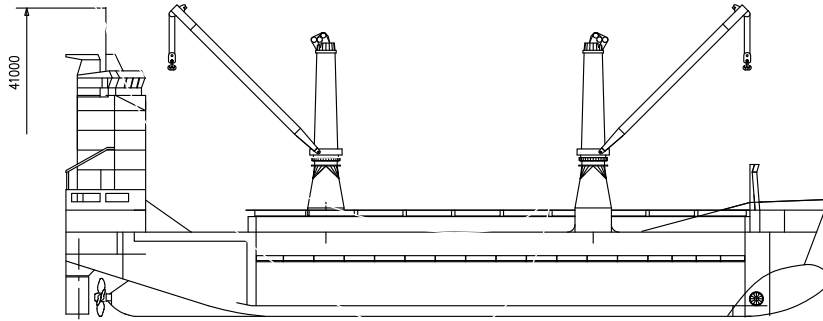
## CAPACITY

Grain	10,530 m <sup>3</sup>
Bale	9,720 m <sup>3</sup>

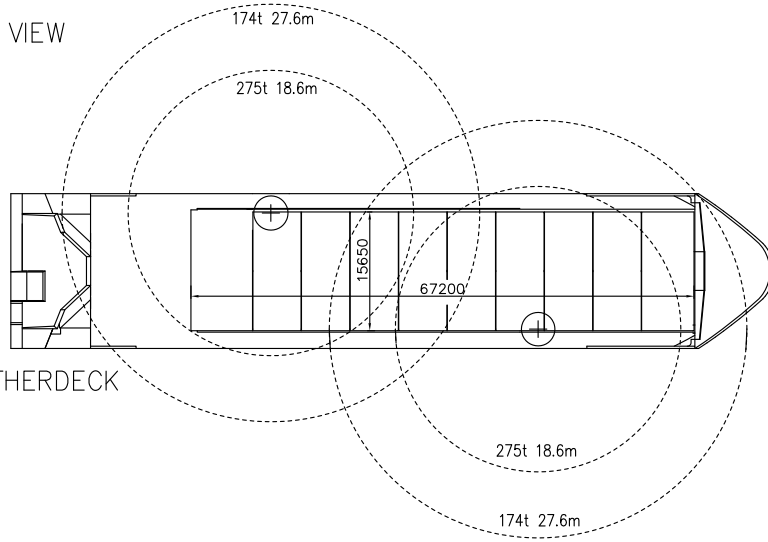
## DEADWEIGHT

At Summer (Sea water) draft  
8,600 mton inc. tween deck  
hatch covers, pillars

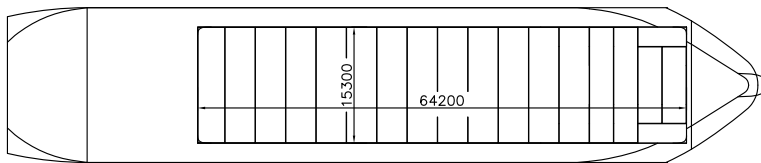
# TRA-TYPE



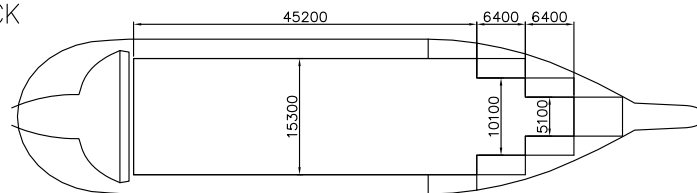
SIDE VIEW



WEATHERDECK

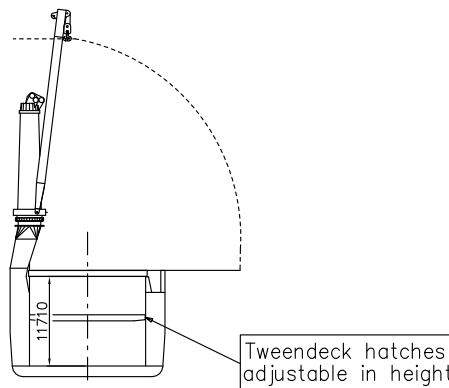


TWEENDECK



TANKTOP

CROSS SECTION



Tweendeck hatches  
adjustable in height

Vessel TC description - m.v. TRAMPER

<b>General</b>				
type of vessel	General cargo ship; container ship; Deep sea heavy cargo			
class	BV ✕HULL ✕MACH ✕AUT-UMS ✕SYS-NEQ-1, general cargo ship, container ship, unrestricted navigation, heavy cargo, (tanktop; 15 t/m2) MON-SHAFT GRABLOADING, Ice Class 1C, Great Lakes fitted			
built	1999			
flag	Dutch			
port of registry	Amsterdam.			
owner	C.V. Scheepvaartonderneming Tramper, Amsterdam			
P&I club	The Standard			
official number	10363 Z A 2004			
IMO no.	9204697			
MMSI	245867000			
call sign	P H A A			
satellite number	Sat-C tlx	424586711		
	phone	324586720 - 1		
	fax	324586722		
	e-mail	<a href="mailto:master.tramper@amosconnect.com">master.tramper@amosconnect.com</a>		
<b>Tonnage</b>		<u>International</u>	<u>Panama</u>	<u>Suez</u>
GT		6,714	23,362 cbm	6,656.4
NT		2,888	pc/ums 6,108	4,861.6
<b>Measurements</b>				
Length overall		100.5	m	
Length between perpendiculars		96.51	m	
Breadth moulded		20.42	m	
Depth moulded		11.10	m	
Width overall (inc. fenders)		20.748	m	
Draft max. Summer (salt)		8.205	m	
Deadweight Summer (salt)		abt 8,600.0	mton	
Airdraft over keel		41.82	m (cranes down)	
Immersion (salt) mton / cm		at 5 m draft:	15.83 m	
		at 6 m draft:	16.85 m	
		at 7 m draft:	17.70 m	
		at 8 m draft:	18.53 m	

<p>Floor space weather deck tween deck lower hold cargo capacity:</p>	<p>1,025.0 m<sup>2</sup> (on hatch covers only) 952.0 m<sup>2</sup> (exc. water chests) 786.0 m<sup>2</sup> (exc. water chests abt. 6800 mton basis 98% bunkers + all ballast tanks dry!</p>									
<p><b>Hatches</b> 1 hold</p> <p>hatch opening to tweendeck hatch opening to lower hold</p> <p>hold heights</p> <p>total hold height</p> <p>Deck strength upper deck hatch covers tween deck hatch covers tank top</p>	<p>10 upperdeck hatch covers 17 tweendeck hatch covers pontoon / lift away</p> <p>64.40 H 15.25 64.40 H 15.25 (partly 10.07 / partly 5.10)</p> <p>most t.d. hatch covers can be positioned in 2 different heights</p> <table border="0"> <tr> <td></td> <td style="text-align: center;">lower hold height</td> <td style="text-align: center;">tween deck height</td> </tr> <tr> <td>low position</td> <td style="text-align: center;">5.93 m</td> <td style="text-align: center;">5.10 m</td> </tr> <tr> <td>high position</td> <td style="text-align: center;">8.03 m</td> <td style="text-align: center;">3.00 m</td> </tr> </table> <p>11.75 m (t/decks not installed)</p> <p>3.0 mton/m<sup>2</sup> 3.0 mton/m<sup>2</sup> 15.0 mton/m<sup>2</sup> (less on water chest)</p>		lower hold height	tween deck height	low position	5.93 m	5.10 m	high position	8.03 m	3.00 m
	lower hold height	tween deck height								
low position	5.93 m	5.10 m								
high position	8.03 m	3.00 m								
<p><b>Cargo facilities</b> <b>Cranes</b> position</p> <p>each crane (from centre line crane) (basis 0 degrees list)</p> <p>cranes working in tandem:</p> <p>both cranes are equipped with an auxiliary hoist</p>	<p>forward crane on starboard, aft crane on port side</p> <p>275 mton SWL at 5.44 - 18.62 m radius decreasing to resp. 250 mton SWL upto 20.59 m radius 200 mton SWL upto 25.15 m radius 174 mton SWL upto 27.44 m radius</p> <p>about 500 mt lifting capacity, subject to cargo details.</p> <p>6 mton SWL</p>									

<b>Lifting beams</b> capacity / own length	1 H 500.0 mton SWL / 15.0 m 1 H 275.0 mton SWL / 12.0 m
<b>Mechanical details</b> mechanical ventilation CO <sub>2</sub> power supply reefer plugs	30 air changes per hour (empty hold) yes 440 volts, 60 Hz upto 900 kW (24 sockets in aft bulkhead PS/SB)
<b>Tank capacities</b> ballast water HFO, inc. service, settling, overflow, drain tanks MGO, inc. service, settling, storage tanks Lub oil, inc. thermal oil, main & aux. Fresh water Misc. tanks (sewage, sludge, waste oil, etc.)	2,879.40 cbm*  900.30 cbm 113.60 cbm 76.90 cbm 229.60 cbm  63.20 cbm  * aft peak port side, presently in use as freshwater tank. May also be used as ballast tank, adding 170.2 cbm to ballast capacity.
<b>Speed/Consumption</b> Speed through water with fuel consumption (inc. shaft generators) basis HFO 380 cst RMG 35; wind not exceeding 2 beaufort; calm smooth sea without current, deep water:	
Speed/Fuel consumption in mts (even keel, draft 7.00 m)	abt. 14.5 knots at abt. 20 ton/day abt. 16.0 knots at abt. 28 ton/day
In port:	abt. 2.5 ton MGO-DMA per day, cargo gear working abt. 1.0 ton MGO-DMA per day, cargo gear idle
<b>Engine</b> type  bow thruster capacity ballast pumps, capacity	Wärtsilä Type 8L 46B 7800 kW, 500 rpm 500 kW 2 H 250 m <sup>3</sup> per hour
<b>Cargo space</b> grain bale	10,530.0 cbm (tweendeck not installed) 9,720 cbm (tweendecks installed)

		TEU	FEU	
gearless container capacity	deck	176	43	
	(TEU: basis 10t/teu)	<u>195</u>	<u>82</u>	+ 8 TEUs à 20 mton
	(FEU: basis 20t/teu)	<u>371</u>	<u>125</u>	
stackloads	deck	60	80	mtons
	hatches	50	65	mtons
	lower hold	100	128	mtons
Remarks:		heights upto 8'6"; in holds 9'6"		
Vessel is fully equipped				
Vessel is partly self-sustained.				

All details are approximate and without guarantee. They must not be used as basis for charter parties or contracts without owner's explicit written authority.

**GIANT MARINE**

General Agents for BigLift Shipping B.V  
3 rue du Maréchal de Lattre de Tassigny  
78150 LE CHESNAY  
Tel: 01.39.63.37.37  
Fax: 01.39.55.81.49  
Email: [info@giantmarine.com](mailto:info@giantmarine.com)

Mic: **M. Gilles THOMAS**  
Email: [thomas@giantmarine.com](mailto:thomas@giantmarine.com)

Mic: **M. Paul-Henri TANON**  
Email: [tanon@giantmarine.com](mailto:tanon@giantmarine.com)