

# HAPPY D-TYPE

LIFTING HEAVY  
CARGO FOR  
WORLDWIDE  
TRANSPORT



**GIANT**  
MARINE

**BIG LIFT**

# HAPPY D-TYPE

NEWBUILDING HAPPY D-TYPE  
HAPPY DELTA, HAPPY DIAMOND, HAPPY DOVER, HAPPY DRAGON, HAPPY DYNAMIC

## HATCH OPENINGS AND ALLOWABLE LOADS

### HATCH OPENINGS

Weather deck	hold 1	25.6 x 17.8 m
	hold 2	70.4 x 17.8 m
Tween deck	Hold 1:	25.6 x 17.8 m
	Hold 2:	64.0 x 17.8 m

### ALLOWABLE LOADS

Weather deck hatch covers	3.6 t/m
Tween deck hatch covers	5.5 t/m
Tank top	20.0 t/m <sup>2</sup>

### FLOOR SPACE

Weather deck		2,788 m <sup>2</sup>
Tween deck	hold 1	1,456 m <sup>2</sup>
	hold 2	1,253 m <sup>2</sup>
Tank top	hold 1	398 m <sup>2</sup>
	hold 2	1,090 m <sup>2</sup>

## CRANES

2 x 400 mt + 1 x 120 mt

### COMBINABLE

800 mt

### TROLLEY

50 mt SWL

## PRINCIPAL DIMENSIONS

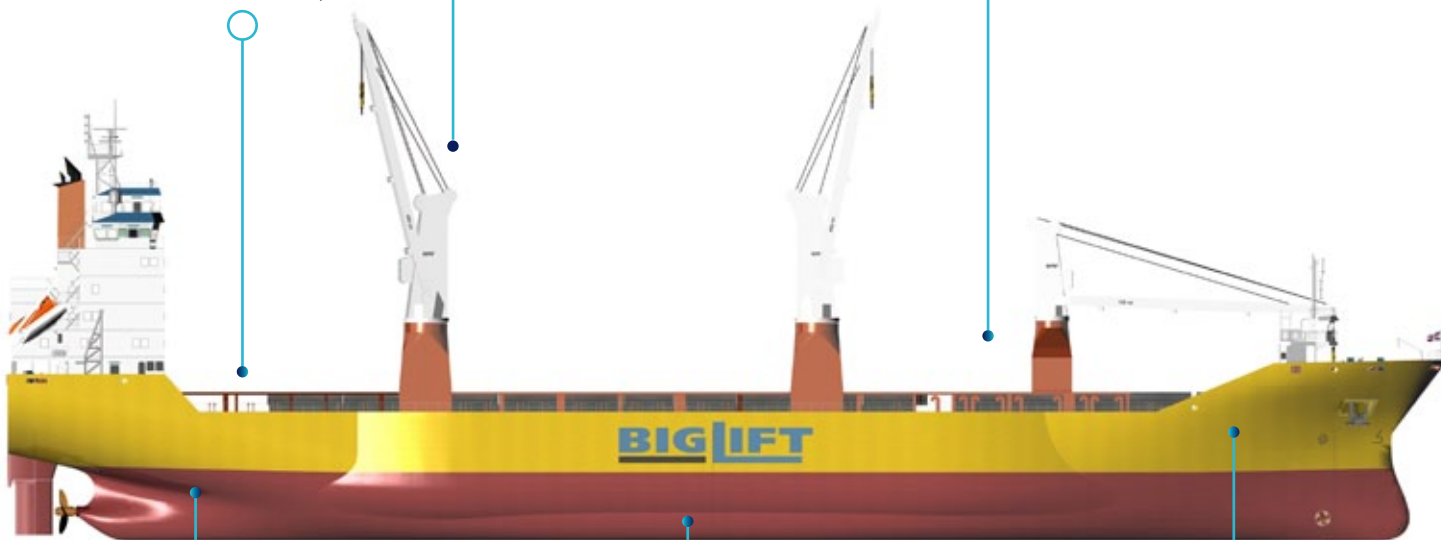
Length overall	156.93 m
Breadth moulded	25.60 m
Height in hold	13.25 m
Summer draft	10.32 m

## REGISTRATION

The Netherlands

### CLASS

Lloyds Register X100A1, Iceclass 1A (Finnish-Swedish Ice class rules), Strengthened for heavy cargoes, LA, LI, NAV1, \*IWS, XLMC, UMS, with descriptive notes: PCWBT, BWMP, SCM



## MAIN ENGINE

Wärtsilä	8400 kW
Bowthruster	850 kW
Service speed	17 kn at draft 7 m

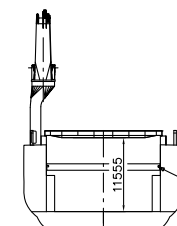
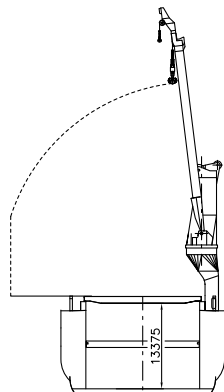
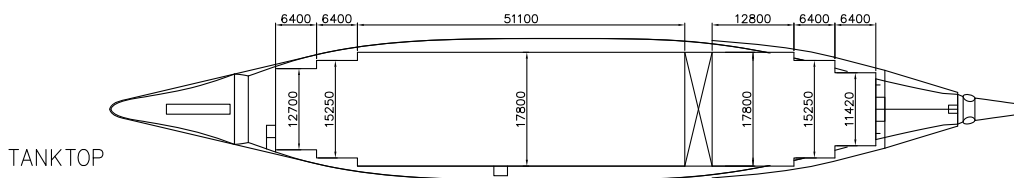
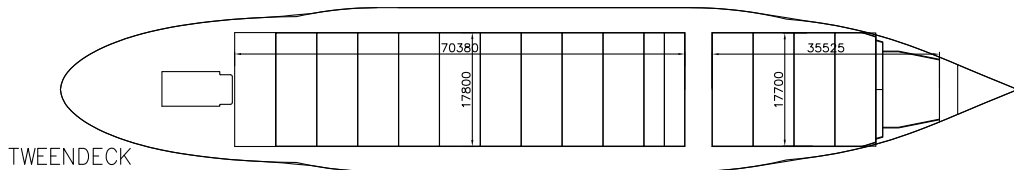
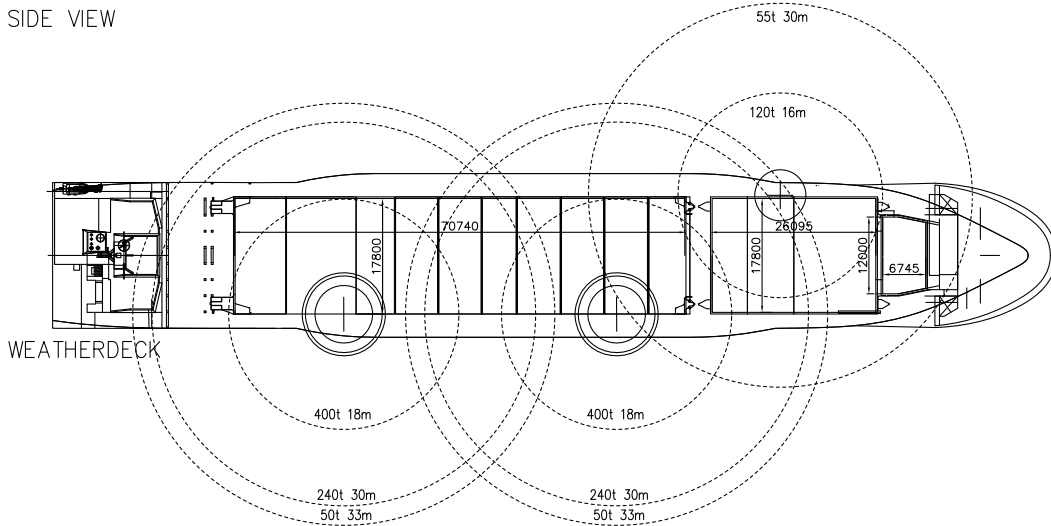
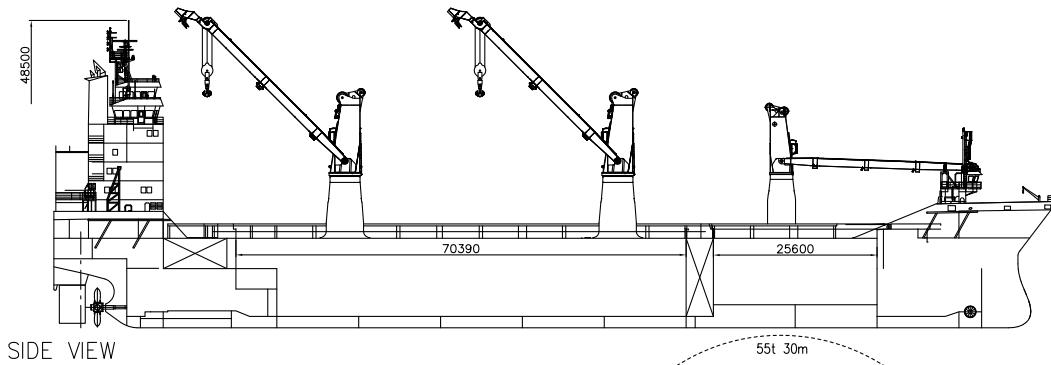
## CAPACITY

Grain = bale	20,892 m <sup>3</sup>
If tween deck installed	19,192 m <sup>3</sup>

## DEADWEIGHT

At Summer (sea water) draft  
17,518 mton inc. tween deck hatch covers, pillars

# HAPPY D-TYPE



Tweendeck hatches adjustable in height



<p><b>Hatches</b></p> <p>Weather deck  hatch no. 0  hatch no. 1  hatch no. 2</p> <p>Tween deck  hatch no. 1  hatch no. 2</p> <p>Bulkheads / compartments</p> <p>hold heights:  hatch 1  hatch 2 low position:  middle position  high position</p> <p>Total height, no tween decks installed:</p> <p>Deck strength weather deck    tween deck  fixed tween deck + monkey rocks  tank top</p>	<p>6.740 x 12.000  25.596 x 17.800 m  70.389 x 17.800 m  steel lift away, end folding type and rolling type</p> <p>25.596 x 17.800 m (4 steel pontoons 6.37 x 17.72 m)  63.999 x 17.800 m (11 steel pontoons:  2 of 3.17 x 17.70 m, 13 of 6.37 x 17.7 m)</p> <p>removable pontoons for up to 12 compartments</p> <table border="0"> <tr> <td>lower hold</td> <td>tween deck</td> </tr> <tr> <td>6.4831m</td> <td>4.075 m</td> </tr> <tr> <td>3.027 m</td> <td>9.105 m</td> </tr> <tr> <td>6.480 m</td> <td>5.895 m</td> </tr> <tr> <td>9.620 m</td> <td>2.755 m</td> </tr> </table> <p>hatch 1: 11.555 m, hatch 2: 13.375 m</p> <table border="0"> <tr> <td>2.6</td> <td>mton/m<sup>2</sup></td> </tr> <tr> <td>3/6</td> <td>mton/m<sup>2</sup> panels 3-7 of hold 2</td> </tr> <tr> <td>5.5</td> <td>mton/m<sup>2</sup></td> </tr> <tr> <td>12.0</td> <td>mton/m<sup>2</sup></td> </tr> <tr> <td>20.0</td> <td>mton/m<sup>2</sup></td> </tr> </table>	lower hold	tween deck	6.4831m	4.075 m	3.027 m	9.105 m	6.480 m	5.895 m	9.620 m	2.755 m	2.6	mton/m <sup>2</sup>	3/6	mton/m <sup>2</sup> panels 3-7 of hold 2	5.5	mton/m <sup>2</sup>	12.0	mton/m <sup>2</sup>	20.0	mton/m <sup>2</sup>
lower hold	tween deck																				
6.4831m	4.075 m																				
3.027 m	9.105 m																				
6.480 m	5.895 m																				
9.620 m	2.755 m																				
2.6	mton/m <sup>2</sup>																				
3/6	mton/m <sup>2</sup> panels 3-7 of hold 2																				
5.5	mton/m <sup>2</sup>																				
12.0	mton/m <sup>2</sup>																				
20.0	mton/m <sup>2</sup>																				
<p><b>Cargo facilities</b></p> <p><b>Cranes</b></p> <p>position  No. 1 crane on PS    No. 2 and 3 cranes on SB</p> <p>Cranes 2 and 3 working in tandem:</p> <p>auxiliary hoist cranes 2 and 3</p>	<table border="0"> <tr> <td>120</td> <td>mton SWL 16m, 90mt - 21m, 55mt - 30m</td> </tr> <tr> <td>400</td> <td>mton SWL at 6 – 18 m radius</td> </tr> <tr> <td>or 325</td> <td>mton SWL at 6 – 22 m radius</td> </tr> <tr> <td>or 200</td> <td>mton SWL at 4.5 – 30 m radius</td> </tr> <tr> <td>or 240</td> <td>mton SWL at 5 – 30 m radius</td> </tr> <tr> <td>max 800</td> <td>mton SWL (subject to cargo details) (basis list = 0)</td> </tr> <tr> <td>50</td> <td>mton SWL at 6.5 – 33 m radius</td> </tr> </table>	120	mton SWL 16m, 90mt - 21m, 55mt - 30m	400	mton SWL at 6 – 18 m radius	or 325	mton SWL at 6 – 22 m radius	or 200	mton SWL at 4.5 – 30 m radius	or 240	mton SWL at 5 – 30 m radius	max 800	mton SWL (subject to cargo details) (basis list = 0)	50	mton SWL at 6.5 – 33 m radius						
120	mton SWL 16m, 90mt - 21m, 55mt - 30m																				
400	mton SWL at 6 – 18 m radius																				
or 325	mton SWL at 6 – 22 m radius																				
or 200	mton SWL at 4.5 – 30 m radius																				
or 240	mton SWL at 5 – 30 m radius																				
max 800	mton SWL (subject to cargo details) (basis list = 0)																				
50	mton SWL at 6.5 – 33 m radius																				
<p><b>Lifting beams</b></p> <p>capacity / length</p>	<p>2 units, SWL 440 mton,  length 12 m between outer lifting points.  Own weight per beam 16 mton</p>																				





<p><b>Mechanical details</b> mechanical ventilation, empty holds</p> <p>CO<sub>2</sub> evaporator power supply reefer plugs</p>	<p>hatch 0: 11x per hour hatch 1: 20x per hour hatch 2: 15x per hour</p> <p>yes yes; capacity 20t/day 440 volts, 60 Hz up to 1275 kW, 60 pcs</p>																								
<p><b>Tank capacities</b> ballast fresh water IFO MDO</p>	<p>7,675.00 m<sup>3</sup> 200.00 m<sup>3</sup> 1,500.00 m<sup>3</sup> 310.00 m<sup>3</sup></p>																								
<p><b>Speed/Consumption</b> Speed through water with fuel consumption basis IFO 380 centistokes; wind not exceeding 2 beaufort; calm smooth sea without current; deep water; draft 8 m</p>																									
<p>Fuel consumption per day (even keel)</p> <p>In port:</p>	<p>abt. 25 mt IFO 380 cSt at 14.5 kn abt. 30 mt IFO 380 cSt at 15.5 kn abt. 37 mt IFO 380 cSt at 16.0 kn no MDO at sea, except for manoeuvring</p> <p>abt. 3.8 ton MDO per day, cargo gear working abt. 1.7 ton MDO per day, cargo gear idle</p>																								
<p><b>Engine</b> type</p> <p>bow thruster capacity ballast pumps, capacity ballast Intering system</p>	<p>Wärtsilä 8400 kW engine</p> <p>Bowthruster 850 kW 2 pumps, each approx. 500 m<sup>3</sup>/hr 4 tanks total 436 m<sup>3</sup> max. ballasting 200 m<sup>3</sup> in 3 minutes</p>																								
<p><b>Cargo space</b></p> <p>tween deck hatch 1 open tween deck hatch 1 closed</p> <p>container capacity deck hold</p> <p>(upto IMO line) (basis 20 ton / teu, 30 ton / feu)</p>	<p>22,775.90 m<sup>3</sup>, hatch 2 NOT installed 21,606.40 m<sup>3</sup>, hatch 2 in low position 21,624.90 m<sup>3</sup>, hatch 2 in middle / high position</p> <table border="1" data-bbox="743 1732 1193 1885"> <thead> <tr> <th>TEU</th> <th>FEU</th> <th>+</th> <th>45'</th> <th>+</th> <th>TEU</th> </tr> </thead> <tbody> <tr> <td>630</td> <td>145</td> <td>+</td> <td>92</td> <td>+</td> <td>156</td> </tr> <tr> <td><u>461</u></td> <td><u>215</u></td> <td></td> <td></td> <td>+</td> <td><u>31</u></td> </tr> <tr> <td><u>1091</u></td> <td><u>360</u></td> <td>+</td> <td><u>92</u></td> <td>+</td> <td><u>187</u></td> </tr> </tbody> </table>	TEU	FEU	+	45'	+	TEU	630	145	+	92	+	156	<u>461</u>	<u>215</u>			+	<u>31</u>	<u>1091</u>	<u>360</u>	+	<u>92</u>	+	<u>187</u>
TEU	FEU	+	45'	+	TEU																				
630	145	+	92	+	156																				
<u>461</u>	<u>215</u>			+	<u>31</u>																				
<u>1091</u>	<u>360</u>	+	<u>92</u>	+	<u>187</u>																				



stackloads	deck	52 ton/stack TEU, 60 ton/stack FEU
	tween deck	48 ton/stack TEU, 52 ton/stack FEU
	hold	125 ton/stack TEU, 175 ton/stack FEU
Remarks: Vessel is fully equipped Vessels is fully self-sustained.		

All details are approximate and without guarantee. They must not be used as basis for charter parties or contracts without owner's explicit written authority.

**GIANT MARINE, General Agents for BigLift Shipping B.V**

To contact us, click on the "CONTACT US" button available on each page of this website and fill up the form.