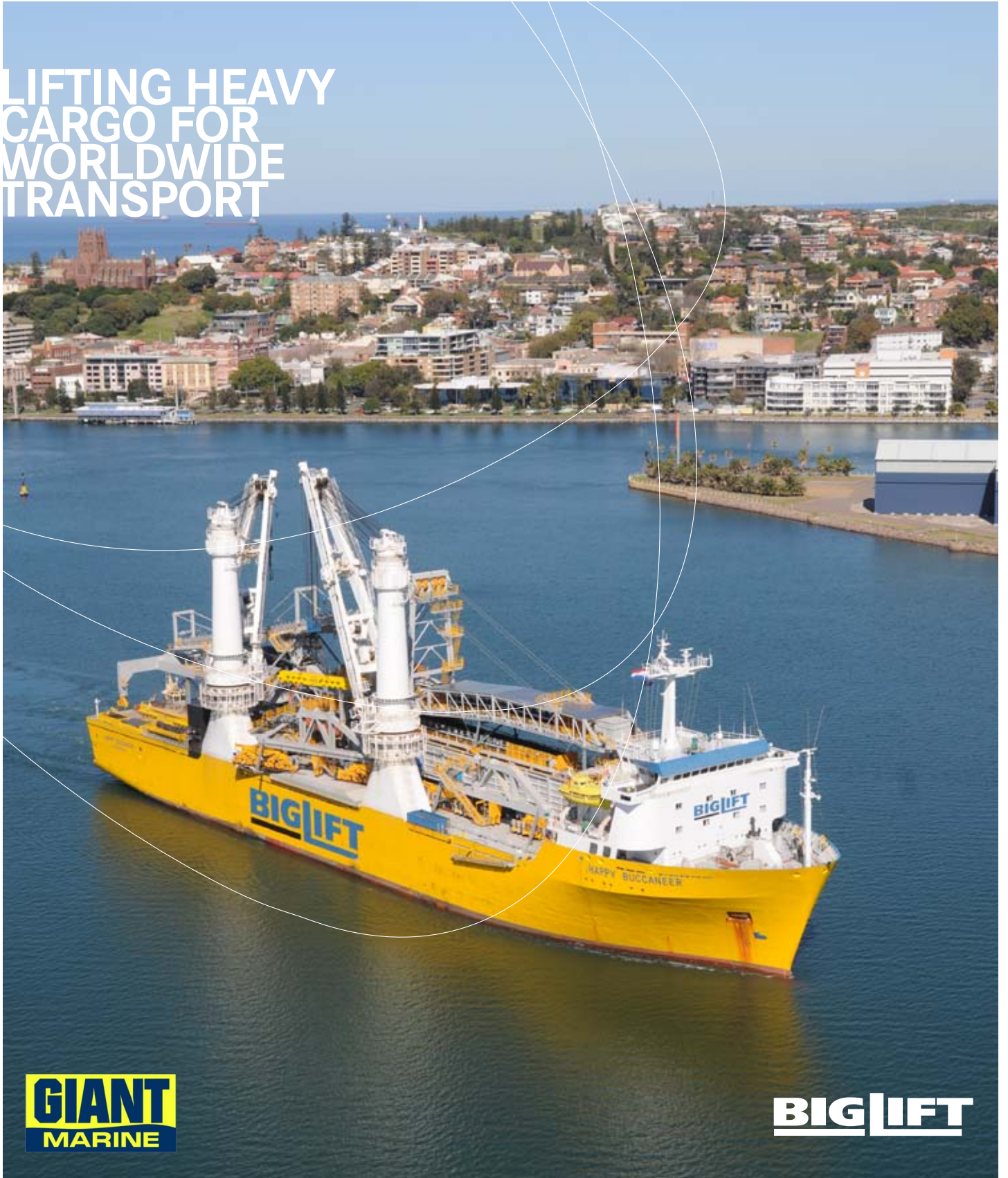


HAPPY BUCCANEER

LIFTING HEAVY
CARGO FOR
WORLDWIDE
TRANSPORT



GIANT
MARINE

BIGLIFT

HAPPY BUCCANEER

HATCH OPENINGS AND ALLOWABLE LOADS

HATCH OPENINGS

Weather deck	110.5 x 20.6 m
Tween deck	67.0 x 20.0 m

ALLOWABLE LOADS

Weather deck hatch covers	15.0 t/m ²
Tween deck hatch covers	15.0 t/m ²
Tank top	15.0 t/m ²

FLOOR SPACE

Weather deck	3,067 m ²
Tween deck	2,275 m ²
Tank top	1,344 m ²

CRANES

2 x 700 mt SWL

COMBINABLE

1400 mt

TROLLEY

25 mt SWL

PRINCIPAL DIMENSIONS

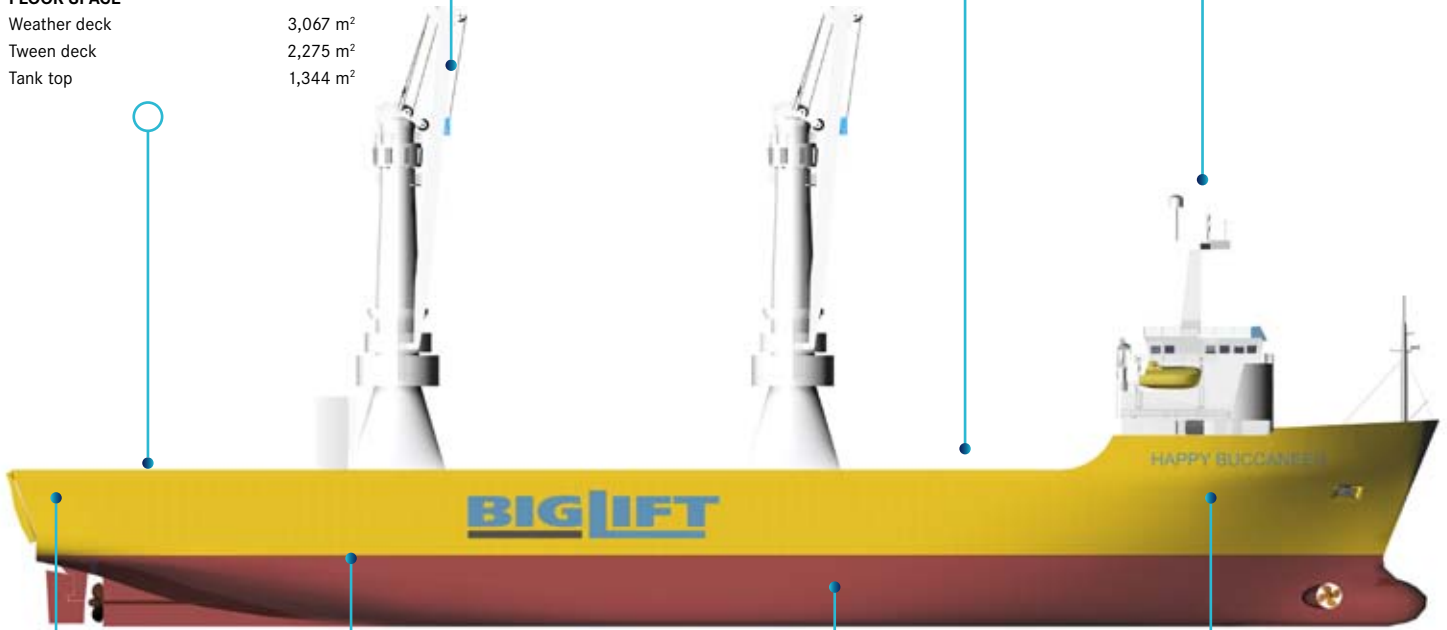
Length overall	145.89 m
Length p.p.	134.00 m
Breadth moulded	28.30 m
Summer draft	8.24 m
Draft open sailing	7.02 m

REGISTRATION

The Netherlands

CLASS

LRS X100A1 XLMC UMS
strengthened for
heavy cargoes



RAMP

Position	stern
Dimensions	20.3 x 7.6 m
Capacity	2,500 mt

MAIN ENGINE

Hitachi Sulzer	2 sets 3840 kW
Bowthruster	750 kW
Service speed	14.75 kn at draft 6.00 m

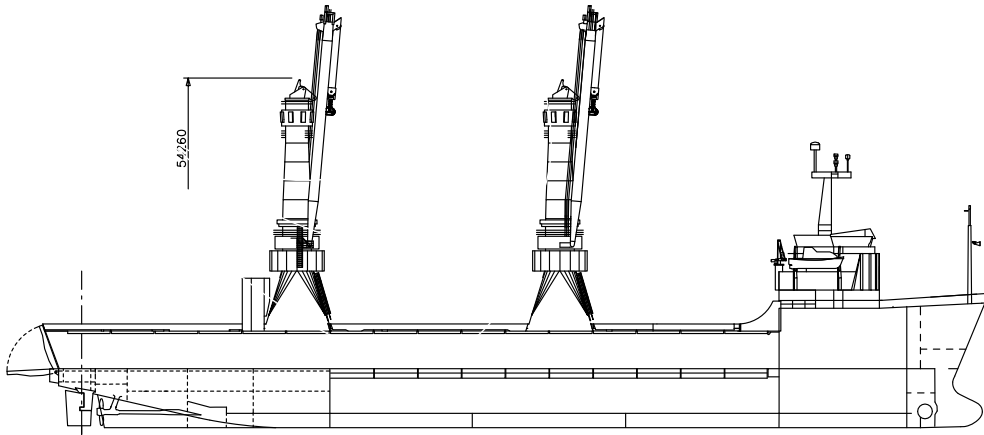
CAPACITY

Lower hold	7,517 m ³
Tween deck	12,391 m ³

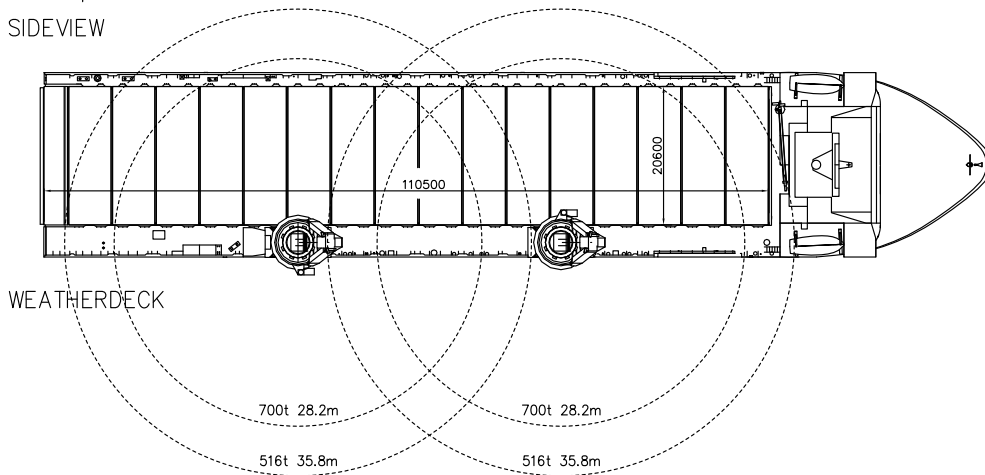
DEADWEIGHT

At Summer (sea water) draft
13,740 mton inc. tween deck
hatch covers, pillars

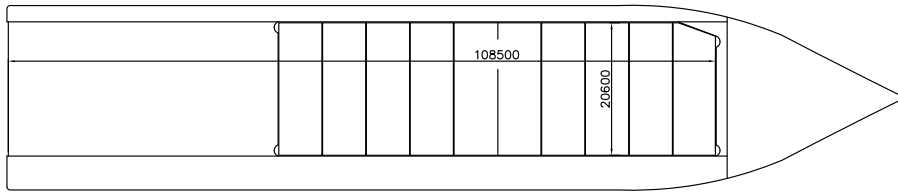
HAPPY BUCCANEER



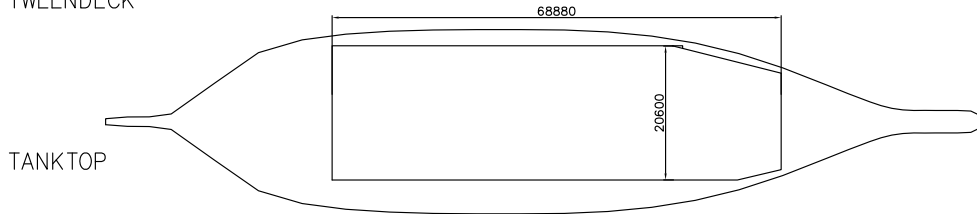
SIDEVIEW



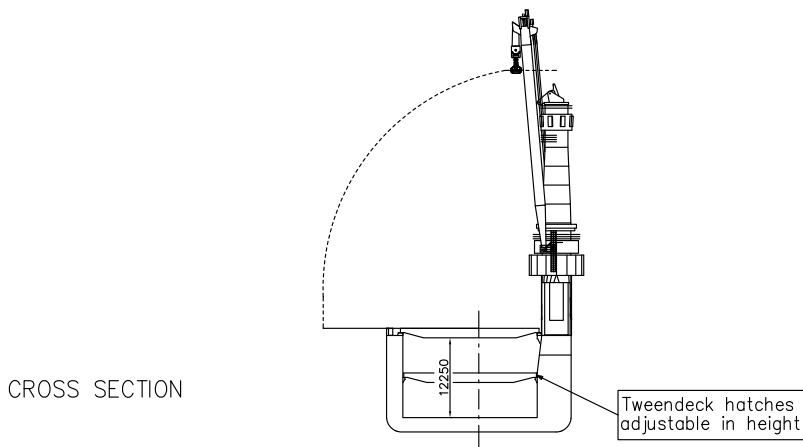
WEATHERDECK



TWEENDECK



TANKTOP



CROSS SECTION

Vessel TC description - m.v. HAPPY BUCCANEER

General				
type of vessel	General Cargo Heavy Lift Ro-Ro vessel			
class	LRS, X100A1, XLMC UMS			
built	1984			
flag	Netherlands			
port of registry	Amsterdam			
owner	BigLift Amstel B.V.			
P&I club	Standard Steamship Owners' P&I, Bermuda			
official number	8756 Z			
IMO no.	8300389			
MMSI	244203000			
call sign	P E N D			
satellite number	phone	+870 7636 28381		
	mobile	+31 6 5115 4272		
	fax	+870 7639 29544		
	e-mail	pend@globeemail.com		
	mini V.sat	+31 20 890 5724		
Inmarsat "C" telex	424420310 + 424420320			
Tonnage		<u>International</u>	<u>Panama</u>	<u>Suez</u>
GT	16,341.00			
NT	4,902.00			
Measurements				
Length overall	145.89	m		
Length between perpendiculars	134.00	m		
Breadth moulded	28.30	m		
Depth moulded	14.80	m		
Width overall (inc. crane platforms)	30.27	m	(31.07m crane cabin outboard)	
Draft Summer (salt)	8.24	m		
Deadweight Summer (salt)	13,740.00	tons		
Airdraft over keel	54.26	m	(boom down)	
Immersion (average)	33.20	mton / cm		
Floor space weather deck	3,067.00	m ²		
tween deck	2,275.00	m ²		
lower hold	1,379.00	m ²		

<p>Hatches 1 hold, 1 hatch main deck tween deck opening to tween deck lower hold heights tween deck lower hold total hold Deck strength weather deck with stanchions tween deck with stanchions Tank top</p>	<p>110.50 x 20.60 all removable pontoons 17 steel pontoons 10 steel pontoons 20.60 m x 110.50 m 20.00 m x 67.20 m 5.3805 m 5.4195 m 12.250 m 5.0 mton/m² 15.0 mton/m² 5.0 mton/m² 15.0 mton/m² 15.0 mton/m²</p>
<p>Ramp Position capacity dimensions working height</p>	<p>stern 2,500 mton 20.30 x 7.60 m 2 to 3.5 metres quay height</p>
<p>Cargo facilities Cranes & position at frame 42 at frame 90</p>	<p>2 at starboard side 700 mton SWL at 0° 700 mton SWL at 0° each crane equipped with trolley 25 mton SWL</p>
<p>Lifting beams capacity / own weight</p>	<p>1 x 1,050.0 mton SWL /40.0 mton 2 x 540.0 mton SWL /11.0 mton</p>
<p>Mechanical details mechanical ventilation CO2 power supply reefer plugs</p>	<p>2 air changes per hour yes: 440 V, 60 Hz in both mast houses and at accommodation</p>
<p>Tank capacities ballast fresh water HFO MDO Lub oil</p>	<p>10,353.59 cbm 209.72 cbm 1,330.82 cbm 238.40 cbm 37.93 cbm</p>

Speed/Consumption													
Speed through water with fuel consumption (inc. shaft generators) basis HFO 380 cst - RMG 35; wind not exceeding 2 beaufort; calm smooth sea without current:													
Fuel consumption per day in mts (even keel) / 6 m draft:	abt. 14.7 knots at abt 31.0 ton/day abt. 13.5 knots at abt 26.0 ton/day												
In port:	abt. 2.8 ton MDO DMC per day, cargo gear working abt. 2.0 ton MDO DMC per day, cargo gear idle												
Engine type bow thruster, capacity ballast pumps, capacity	Hitachi Sulzer 6ZAL 40 2 sets, each 3838 kW at 560 rpm 735 kW 3 at 600 m ³ per hour each												
Cargo space bale tweendeck lower hold	7,517 cbm 12,391 cbm												
container capacity, tweendecks not on board:	<table border="1"> <thead> <tr> <th>TEU</th> <th>FEU+</th> <th>TEU</th> </tr> </thead> <tbody> <tr> <td>640</td> <td>320</td> <td>8</td> </tr> <tr> <td><u>410</u></td> <td><u>192</u></td> <td><u>26</u></td> </tr> <tr> <td>1,050</td> <td>512+</td> <td>34</td> </tr> </tbody> </table>	TEU	FEU+	TEU	640	320	8	<u>410</u>	<u>192</u>	<u>26</u>	1,050	512+	34
TEU	FEU+	TEU											
640	320	8											
<u>410</u>	<u>192</u>	<u>26</u>											
1,050	512+	34											
stackloads	<table border="1"> <tbody> <tr> <td>deck</td> <td>60</td> <td>80</td> <td>tons</td> </tr> <tr> <td>tweendeck</td> <td>60</td> <td>80</td> <td>tons</td> </tr> <tr> <td>lower hold</td> <td>60</td> <td>80</td> <td>tons</td> </tr> </tbody> </table>	deck	60	80	tons	tweendeck	60	80	tons	lower hold	60	80	tons
deck	60	80	tons										
tweendeck	60	80	tons										
lower hold	60	80	tons										
Remarks: Vessel is fully equipped, Vessel is partly self-sustained.													

All details are approximate and without guarantee. They must not be used as basis for charter parties or contracts without owner's explicit written authority.

GIANT MARINE

General Agents for BigLift Shipping B.V
3 rue du Maréchal de Lattre de Tassigny
78150 LE CHESNAY
Tel: 01.39.63.37.37
Fax: 01.39.55.81.49
Email: info@giantmarine.com

Mic: **M. Gilles THOMAS**
Email: thomas@giantmarine.com

Mic: **M. Paul-Henri TANON**
Email: tanon@giantmarine.com