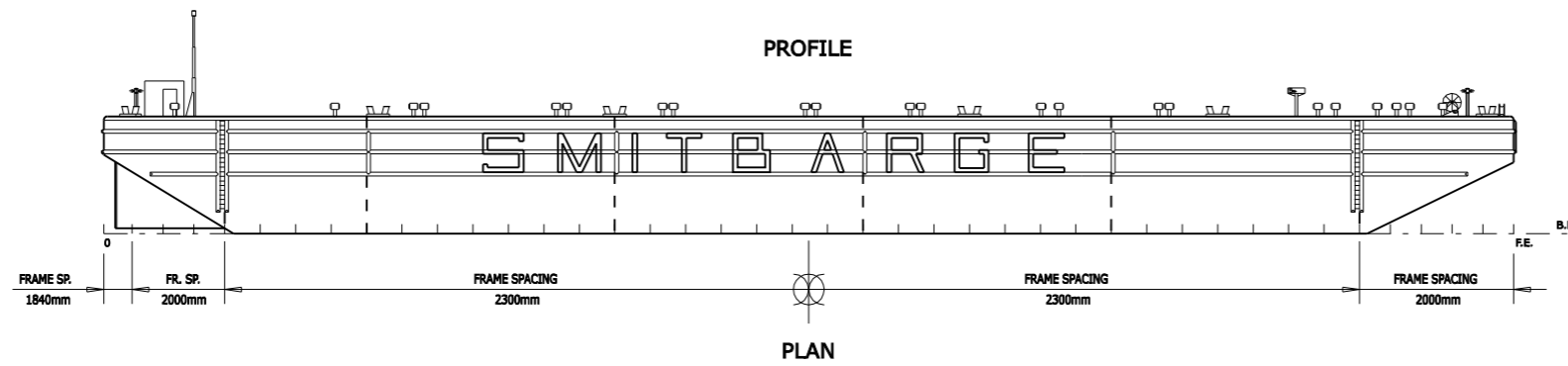


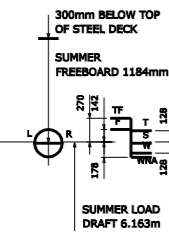
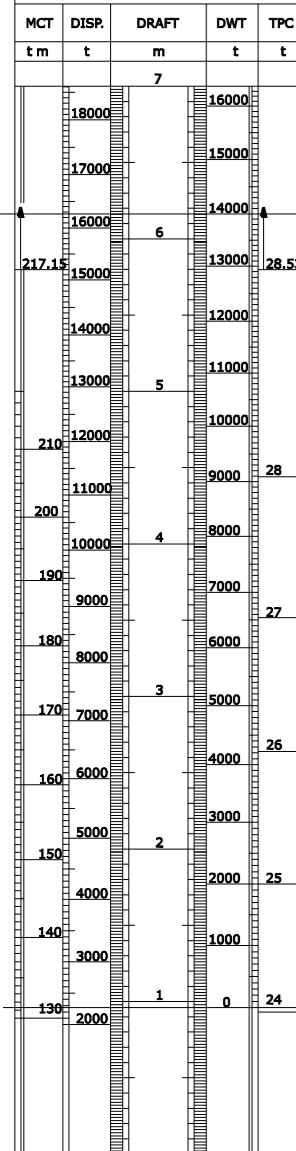
SMITBARGE 1 SMITBARGE 2

91.44m DECK CARGO BARGE

CAPACITY PLAN

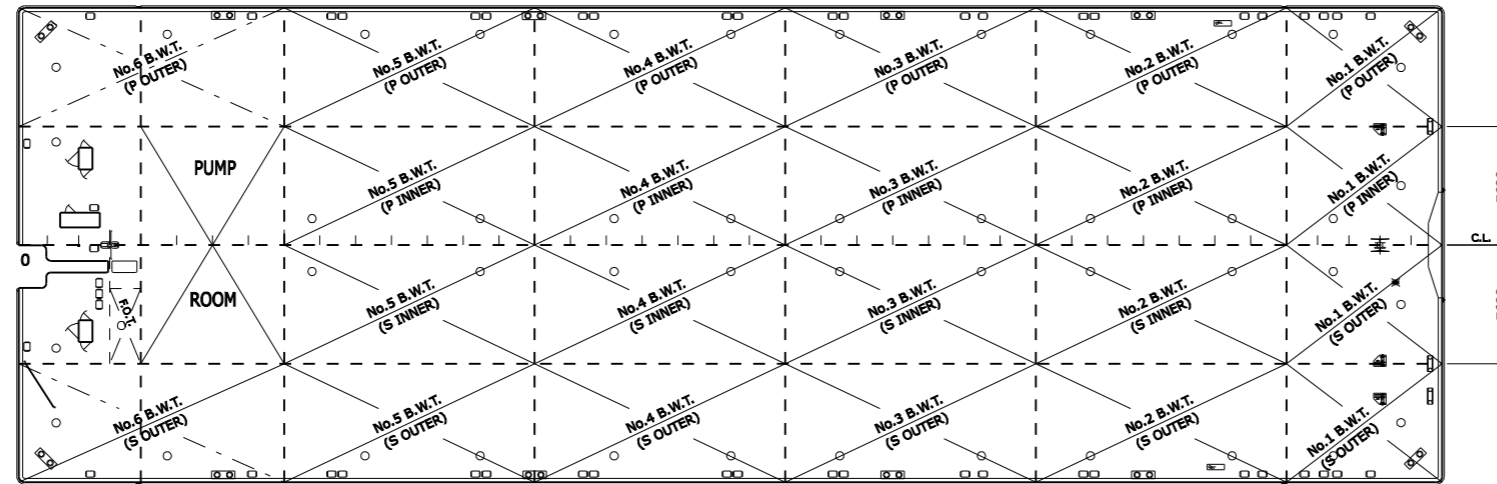


DEAD WEIGHT SCALE



FULL LOAD CONDITION
DRAFT (EXT) 6.176 m
DISPLACEMENT 16242 t

LIGHT CONDITION
DRAFT 0.961 m
DISPLACEMENT 2262 t



BALLAST WATER TANKS				$\rho = 1.025$			
COMPARTMENT	EXTENT		CAPACITY (m ³)	WEIGHT (t)	G(m)	KG (m)	
	SMITBARGE 1	SMITBARGE 2					
No.1 B.W.T.	P INNER	FR.72 - F.E. FR.36 - F.E.	406	416	-39.98	4.73	
	S INNER	FR.72 - F.E. FR.36 - F.E.	406	416	-39.98	4.73	
	P OUTER	FR.72 - F.E. FR.36 - F.E.	406	416	-39.98	4.73	
	S OUTER	FR.72 - F.E. FR.36 - F.E.	406	416	-39.98	4.73	
No.2 B.W.T.	P INNER	FR.58 - FR.72 FR.29 - FR.36	918	941	-27.67	3.81	
	S INNER	FR.58 - FR.72 FR.29 - FR.36	918	941	-27.67	3.81	
	P OUTER	FR.58 - FR.72 FR.29 - FR.36	918	941	-27.67	3.81	
	S OUTER	FR.58 - FR.72 FR.29 - FR.36	918	941	-27.67	3.81	
No.3 B.W.T.	P INNER	FR.44 - FR.58 FR.22 - FR.29	918	941	-11.57	3.81	
	S INNER	FR.44 - FR.58 FR.22 - FR.29	918	941	-11.57	3.81	
	P OUTER	FR.44 - FR.58 FR.22 - FR.29	918	941	-11.57	3.81	
	S OUTER	FR.44 - FR.58 FR.22 - FR.29	918	941	-11.57	3.81	
No.4 B.W.T.	P INNER	FR.30 - FR.44 FR.15 - FR.22	918	941	4.53	3.81	
	S INNER	FR.30 - FR.44 FR.15 - FR.22	918	941	4.53	3.81	
	P OUTER	FR.30 - FR.44 FR.15 - FR.22	918	941	4.53	3.81	
	S OUTER	FR.30 - FR.44 FR.15 - FR.22	918	941	4.53	3.81	
No.5 B.W.T.	P INNER	FR.16 - FR.30 FR.8 - FR.15	918	941	20.63	3.81	
	S INNER	FR.16 - FR.30 FR.8 - FR.15	918	941	20.63	3.81	
	P OUTER	FR.16 - FR.30 FR.8 - FR.15	918	941	20.63	3.81	
	S OUTER	FR.16 - FR.30 FR.8 - FR.15	918	941	20.63	3.81	
No.6 B.W.T.	P OUTER	FR.0 - FR.16 FR.0 - FR.8	810	830	36.06	4.23	
	S OUTER	FR.0 - FR.16 FR.0 - FR.8	810	830	36.06	4.23	

CAPACITY TABLE

FUEL OIL TANK						$\rho = 0.85$			
COMPARTMENT	EXTENT		CAPACITY (m ³)	WEIGHT (t)	G(m)	KG (m)			
	SMITBARGE 1	SMITBARGE 2							
F.O.T.	S	FR.6 - FR.8 FR.3 - FR.4	26	22	38.88	4.85			

MAXIMUM PERMISSIBLE UNIFORM LOADINGS

POSITION	LOAD
ON MAINDECK	15 t/m
CROSSING POINTS OF BULKHEADS	435 ton
CROSSING POINTS OF BULKHEADS AND TRANSVERSES	260 ton
BULKHEADS AND TRANSVERSES	160 ton

NOTE: ~

G FORWARD(-), AFTWARD(+)
ALL FIGURES VALID FOR SMITBARGE 2.
FIGURES FOR SMITBARGE 1 ARE ALMOST EQUAL,
DIFFERENCES ARE MINOR.

GENERAL PARTICULARS

LENGTH EXTREME --- 91.715 m LENGTH MOULDED --- 91.440 m
BREADTH EXTREME --- 30.755 m BREADTH MOULDED --- 30.480 m
DEPTH EXTREME --- 7.647 m DEPTH MOULDED --- 7.620 m

SUMMER DRAFT CONDITION
DRAFT --- 6.163 m
DEADWEIGHT --- 13980 ton

TONNAGES	
GROSS	5688
NET	1706

CLASSIFICATION SOCIETY
LLOYDS REGISTER OF SHIPPING CLASS 1000 "PONTOON"
YEAR BUILT : SMITBARGE 1 - 1986
: SMITBARGE 2 - 1985

SMITBARGE 1.5x VERSCHAALD

C	31-AUG-00	PVe	FOR USE	GVe	HHo	TBo		
A	31-AUG-00	PVe	FOR INTERNAL REVIEW	GVe	HHo	TBo		
Rev	Date	Drawn	Description	Chkd	E.Appr	P.Appr	Client	Date
Subject CAPACITY PLAN								
Project SMITBARGE 1 AND 2								
Client SMIT TRANSPORT AND HEAVY LIFT BV								
SMIT ENGINEERING BV P.O.Box 1042, 3000 BA Rotterdam				CAD-dwg not to be changed manually Orig. Size A3				
Scale NTS		Drawing No SMITBARGE-1-2			Sheet 1 of 1		Rev C	