



## SPECIFICATIONS

**Type of Vessel**  
**Build (yard)**  
**Class Notation**

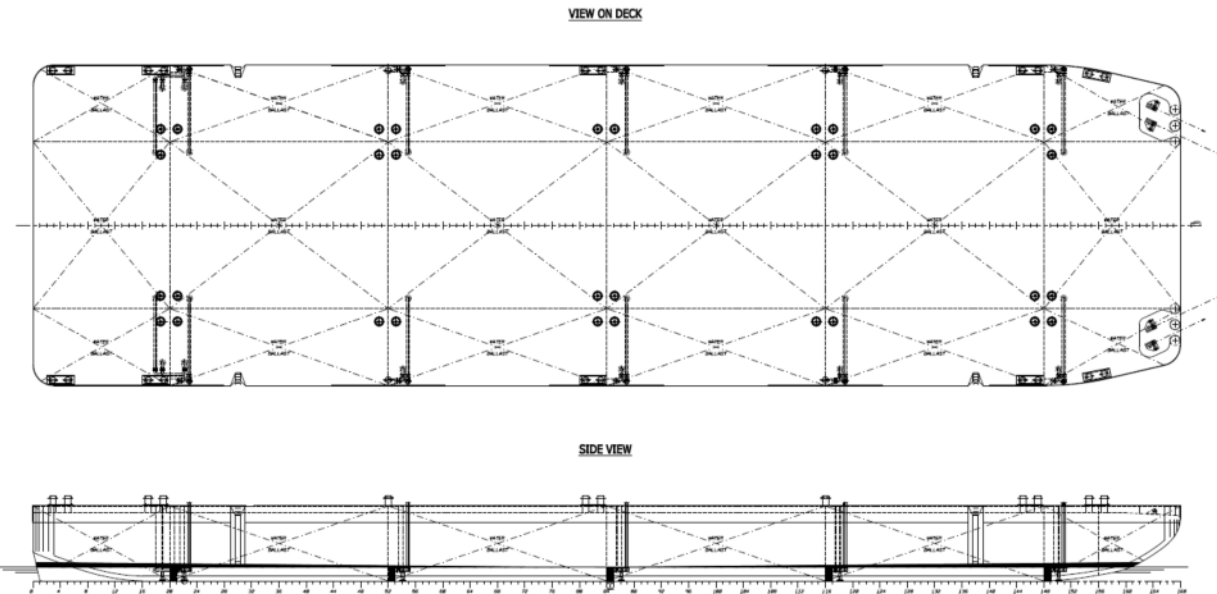
: Submersible pontoon  
: 2008 (Jiangmen, China)  
: LR 100 AN, Unmanned  
Pontoon, Semi-submersible  
to a Maximum draught at  
the stern of 12m

**IMO Number**  
**Call Sign**

: To be determined  
: To be determined

**Principal Dimensions**  
**Empty/Scantling draft**  
**Lightweight**  
**G.T./N.T.**  
**Max. tonnage sea**  
**Max deckload**

: 84.00 / 23.50 / 5.50 m  
: 0.90 / 4.67 m  
: Approx. 1580 metric ton  
: To be determined  
: Approx. 6500 metric ton  
: 15 ton/m<sup>2</sup>



SMIT Transport Europe B.V.  
Tel. + 31 10454 99 11  
Fax + 31 10411 50 95  
transport.europe@smit.com

SMIT Heavy Lift Europe B.V.  
Tel. + 31 10454 99 11  
Fax + 31 10414 32 38  
heavylift.europe@smit.com

P.O. Box 59052  
3008 PB Rotterdam  
The Netherlands

Harbour nr. 2204  
Waalhaven OZ 85  
3087 BM Rotterdam

[WWW.SMIT.COM](http://WWW.SMIT.COM)

*All details are believed to be correct but not guaranteed. Spring, 2007*