



General

American Bureau of Shipping (ABS) ⌘ A1 semi-submersible ocean-going barge.

Dimensions

Length over all	115.00 m
Breadth moulded	31.60 m
Depth moulded	6.80 m
Draft moulded	5.17 m
Deadweight summer draft	13000 tonnes
Deck load maximum	15 tonnes/m ²

Ballast system

Combination of compressed air and ballast pump system, with 2 diesel engine driven air compressors of 1000 m³/hr at 3.5 bar each and 2 electrically driven ballast pumps of 225 m³/hr at 25 m.w.c. each.

Generators

Two main generators of 185 kVA each, 440 V AC, 3 phase, 60 Hz.

One standby generator of 10 kVA, 230 V AC, 3 phase, 60 Hz.

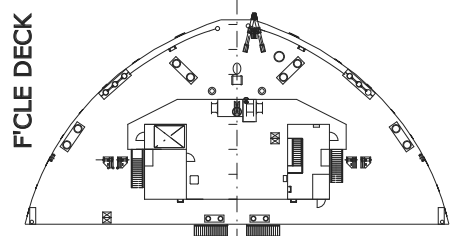
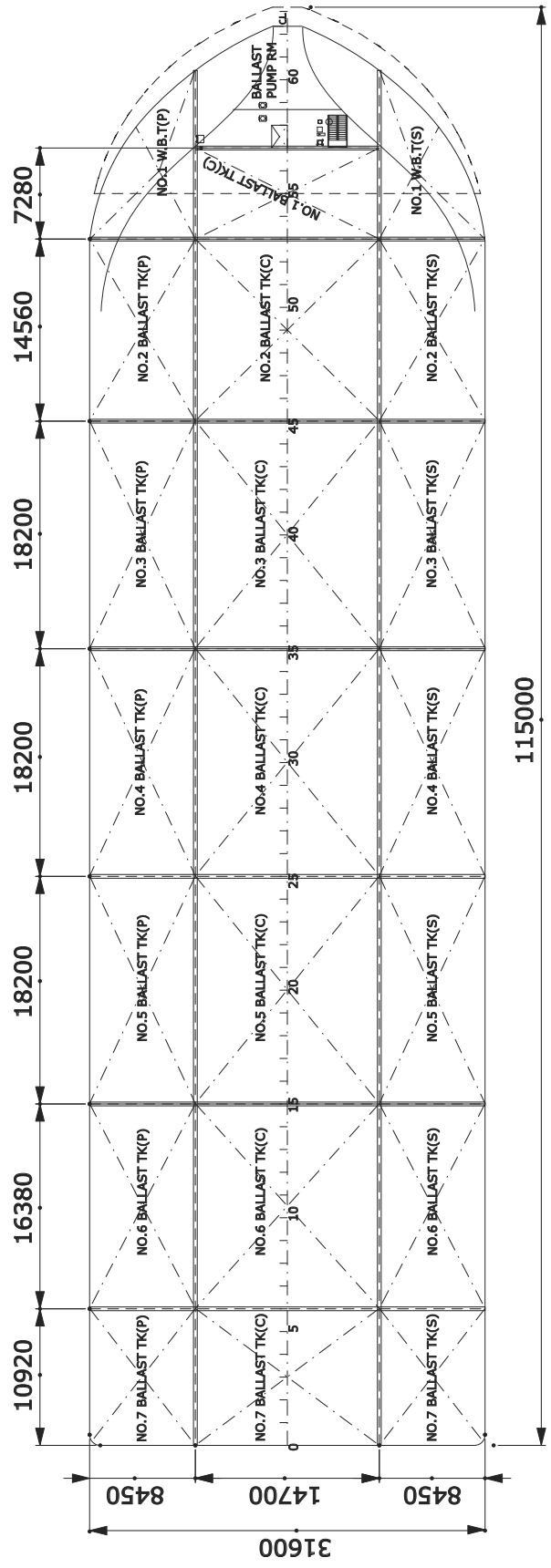
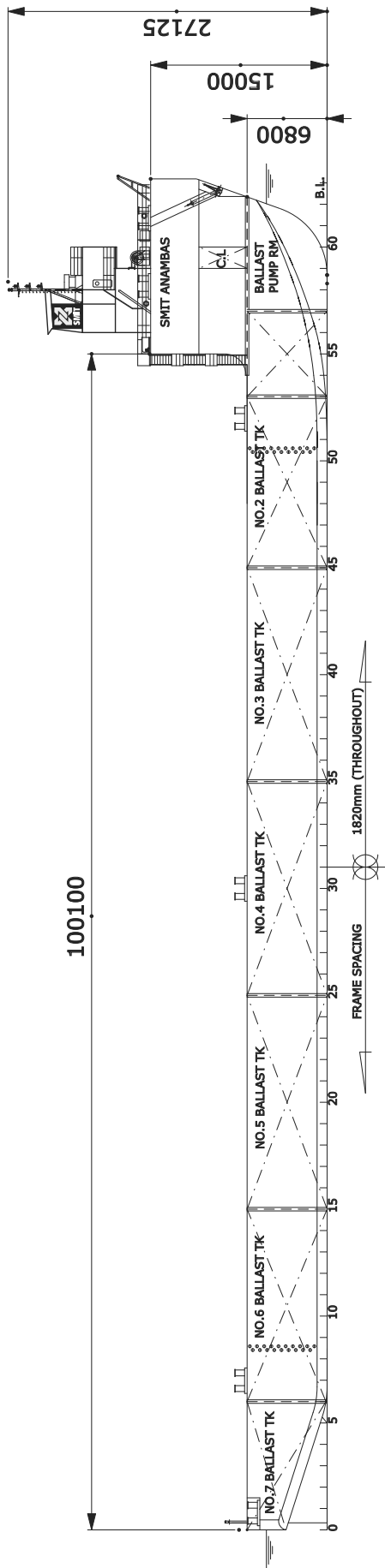
Other specifications

Tank sounding and draught measurement system for all ballast tanks.

Central control room for ballasting and deballasting, including alarms and watch keeping controls of the machinery.

Air-conditioned living quarters consisting of 2 bunks, resting facility, pantry, toilet and shower.

SMIT ANAMBAS



GENERAL PLAN SMIT ANAMBAS

All details are believed to be correct but not guaranteed.